



lusotufu®  
rugs & carpets for life

CUSTOM-MADE

FAST RUGS



IT IS A  
WAY  
OF LIFE.







# INDEX

**OUR HISTORY** 04

**FAST RUGS** 06

**CREATING YOUR RUG** 10  
STEP-BY-STEP

**FINISHES** 12

**THE RIGHT DIMENSIONS** 28  
FOR YOUR RUG OR RUNNER

**EXAMPLES** 32

The colours shown may differ slightly from the original product.









lusotufo®  
rugs & carpets for life



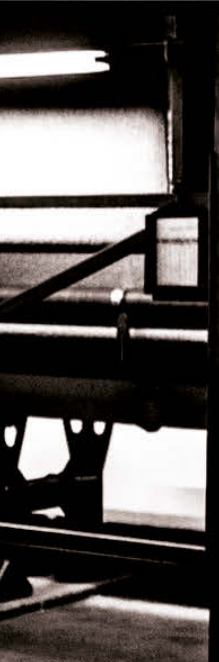
# 85 years providing solutions

---

Over the past 85 years our extensive experience has enabled us to grow and invest with confidence in the development of an ever increasing number of standard and custom-made carpet and rug qualities.

Having absolute control over the entire production process from raw materials to blending, dyeing, spinning, tufting and finishing provides us with an important competitive advantage giving an additional guarantee to the quality and accuracy of our products.

Unique textile floor coverings are manufactured at Lusotufo on a daily basis for residential areas and hospitality projects, fulfilling commercial requirements in a vast variety of styles.











# FAST RUGS

Keep it simple

---

We can make your Fast Rug from a simple custom cut size carpet of your choice.

You can complete your Fast Rug with a broad range of bindings and finishings.





Our **Fast Rug** service offers a vast selection of carefully considered materials and finishes to ensure that our products meet the high standards of quality for which we are known.

Our rugs are produced manually by our team of skilled operatives with a vast knowledge and experience in the precision and accuracy required.

Every detail is thoroughly assessed to ensure that the end result is precisely in line with your every expectation.

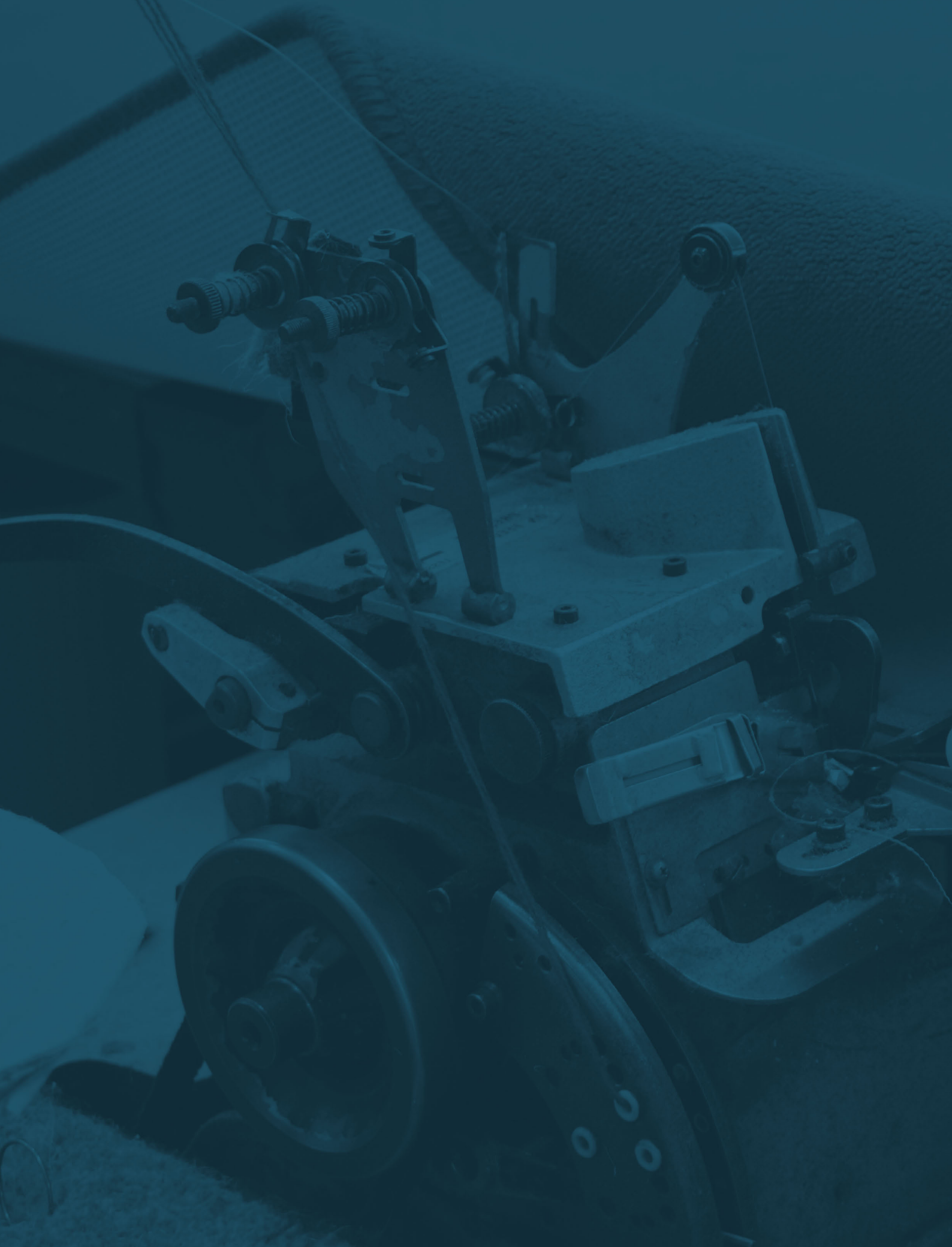






CUSTOM-MADE | FAST RUGS







# CREATING YOUR RUG

---

We can make your **Lusotufo Fast Rug** from a simple custom cut size carpet of your choice.

## STEP-BY-STEP

**STEP 1** - CHOOSE A **CARPET**

**STEP 2** - CHOOSE A **FINISHING**

**STEP 3** - CHOOSE A **SIZE**



# BINDING

## TYPE OF FINISHES

---

**YARN-OVERLOCK** - This is a classic finish by a sewing machine that creates an edge around the rug. The overlock yarn matches the rug colour and has an excellent resistance to use.

**PERLON** - is a versatile and attractive serging tape, sewn on with a straight stitch on both sides of the rug and it comes in a vast range of colours and it has a good resistance to use.

**MICRO-OVERLOCK** - is a very discreet overlock finish stitched with a thin yarn around the rug. This is the same as YARN OVERLOCK but more discreet and thinner. In higher pile rugs this type of finish looks almost invisible.

**TAPE** - This type of finish presents a narrow polyester tape stitched around the rug. Available in a vast range of modern colours, the tape stitch remains visible on both sides of the rug.

**JUST** - Available in several colours, this finish presents a discreet narrow polyester tape sewed around the back of the rug, with no visible stitches and reinforced by a border placed behind the rug.

**INVISIBLE** - This type of rug finish is innovative and entirely invisible. It is achieved by placing an adhesive band on the back, leaving the rug with an aesthetically pleasing and modern look.

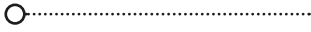
**FOLD** - This is the ideal option for customers that prefer comfort combined with design. The carpet is folded on the edges and a rug felt is applied on the back, providing extreme underfoot comfort.

The Fold finish looks very clean and it requires an increase of 10 cm extra (in width and in length) for folding the boundaries around the rug.

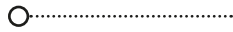
---



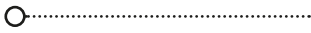
YARN-OVERLOCK



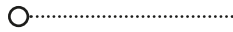
PERLON



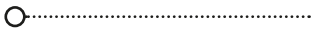
MICRO-OVERLOCK



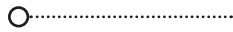
TAPE



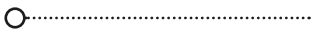
JUST



INVISIBLE



FOLD







YARN-OVERLOCK



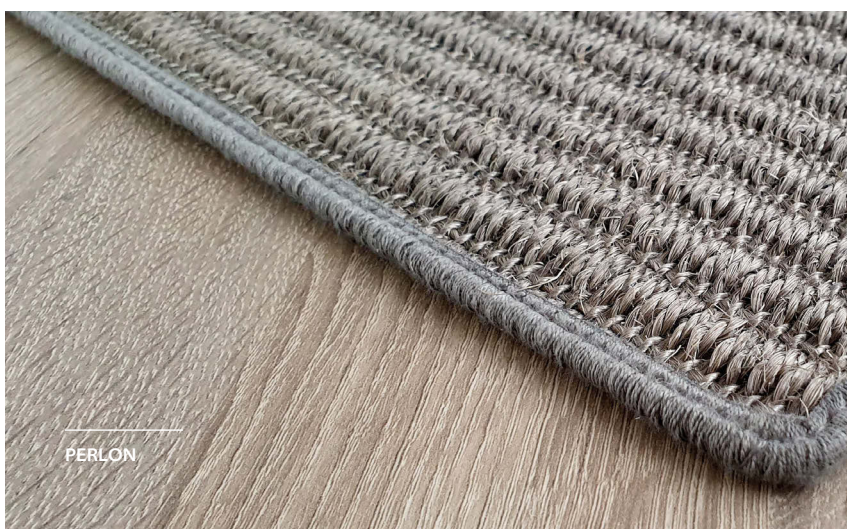
MICRO-OVERLOCK



PERLON

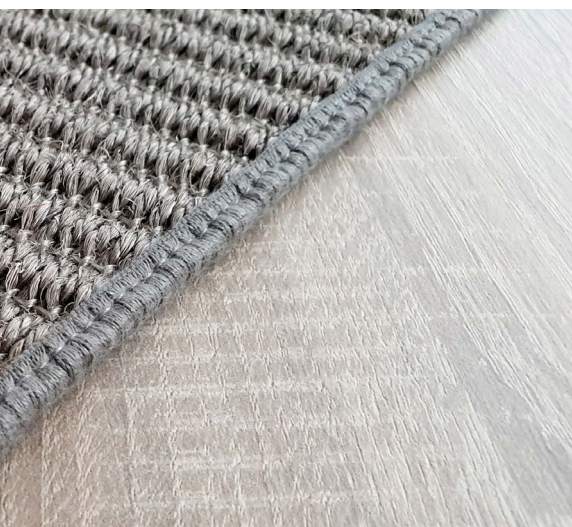


FOLD



PERLON







# BORDERS

## TYPE OF FINISHES

---

Our extensive border collection allows you to express your own unique style. From a discrete narrow edging to a bold wide band border or a smart striped combination featuring two different tape colours or finishes, your choice of edgings for finishing rugs and runners is vast.

---



### **BASIC**

Available widths  
1,5cm | 3cm | 5,5cm



### **NORMAL**

Available widths  
3cm | 5,5cm | 8cm | 10cm



### **DOUBLE**

Available widths  
Outer Border - 5,5cm | 8cm | 10cm  
Inner Border - from 1,5cm to 5,5cm



### **PRESTIGE**

Available widths  
5,5cm | 8cm | 10cm



### **PRESTIGE SPECIAL**

Available widths  
5,5cm | 8cm | 10cm

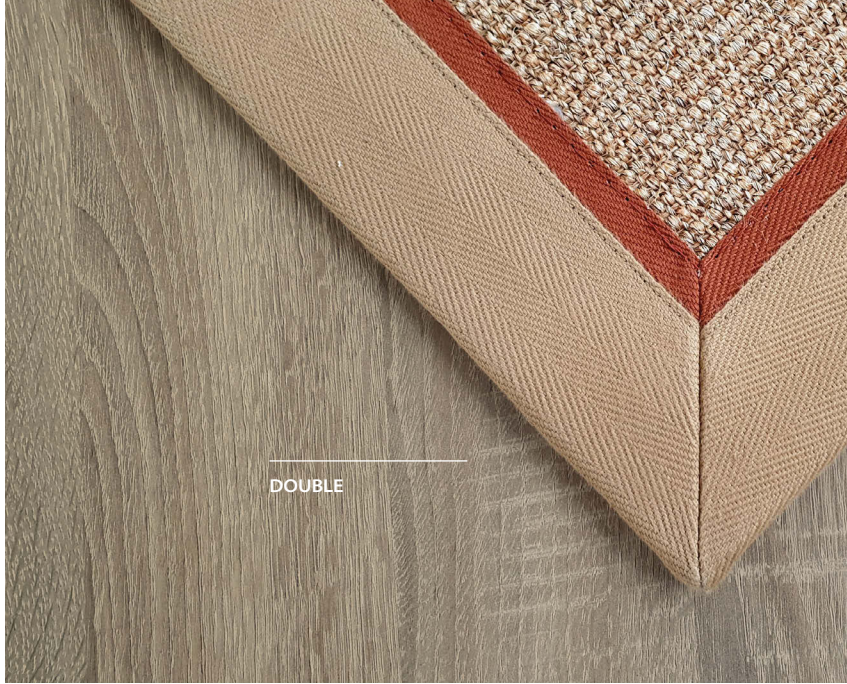


### **ELITE**

Available widths  
5,5cm | 8cm | 10cm











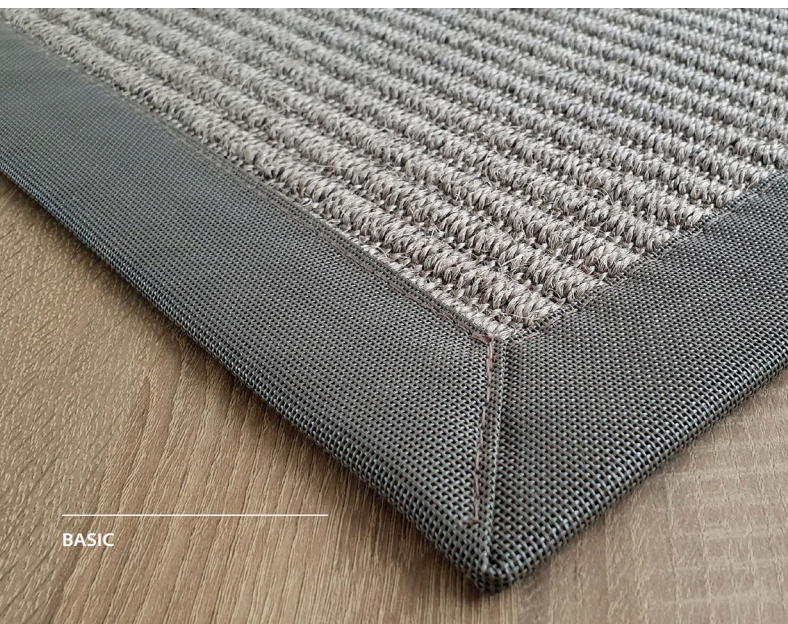
ELITE



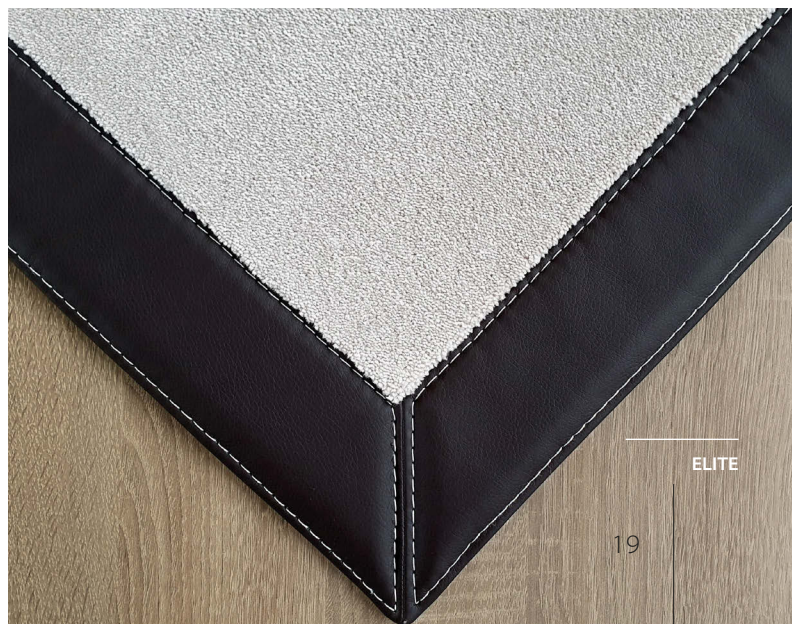
PRESTIGE SPECIAL



DOUBLE



BASIC



ELITE

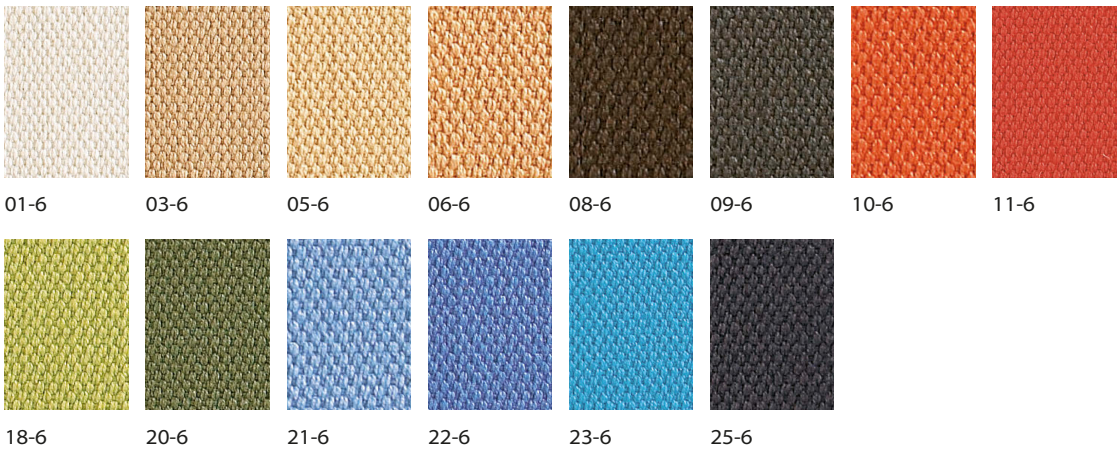


# BORDERS TYPE OF FINISHES

\_\_\_\_\_

## DK

COMPOSITION  
100% COTTON



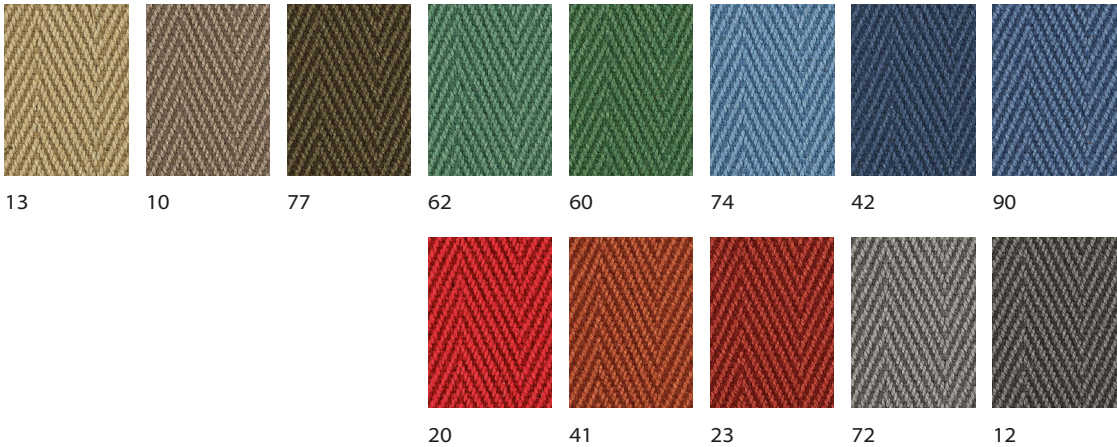
Carpet: **Sisal TUNIS ref. 9344** | Border: **DK ref. 08-6** | Type of Finish: **NORMAL** | Width: **5,5 cm**





LE

COMPOSITION  
100% COTTON



Carpet : Sisal ACRA ref. 8011 | Border: LE ref. 13 + 23 | Type of Finish: DOUBLE | Width: 5,5 cm + 1,5 cm



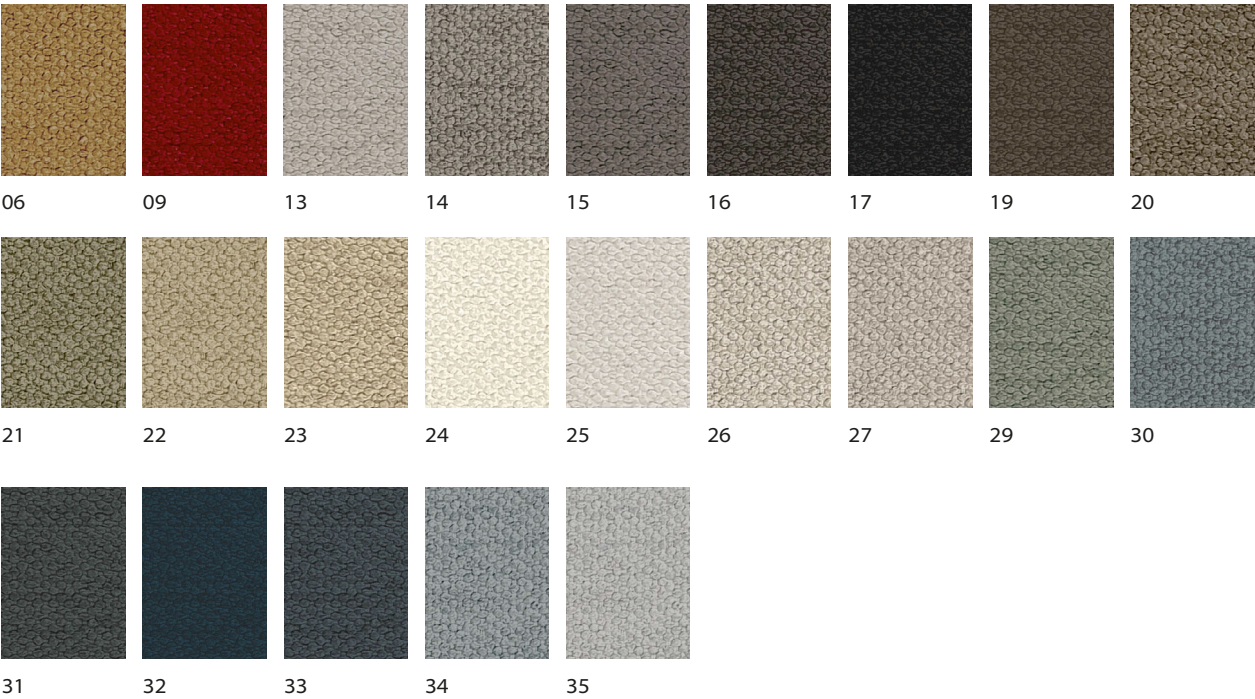


# BORDERS TYPE OF FINISHES

\_\_\_\_\_

## WISE

COMPOSITION  
100% POLYESTER



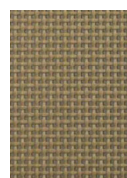
Carpet: **SOFT FEELINGS** ref. 8602 | Border: **WISE** ref. 25 | Type of Finish: **BASIC** | Width: 3 cm



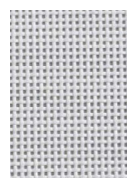


# TREND

COMPOSITION  
POLYESTER + PVC



beige



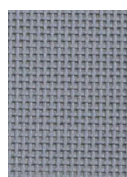
white



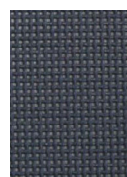
camel



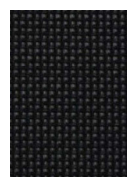
brown



grey



silver



black



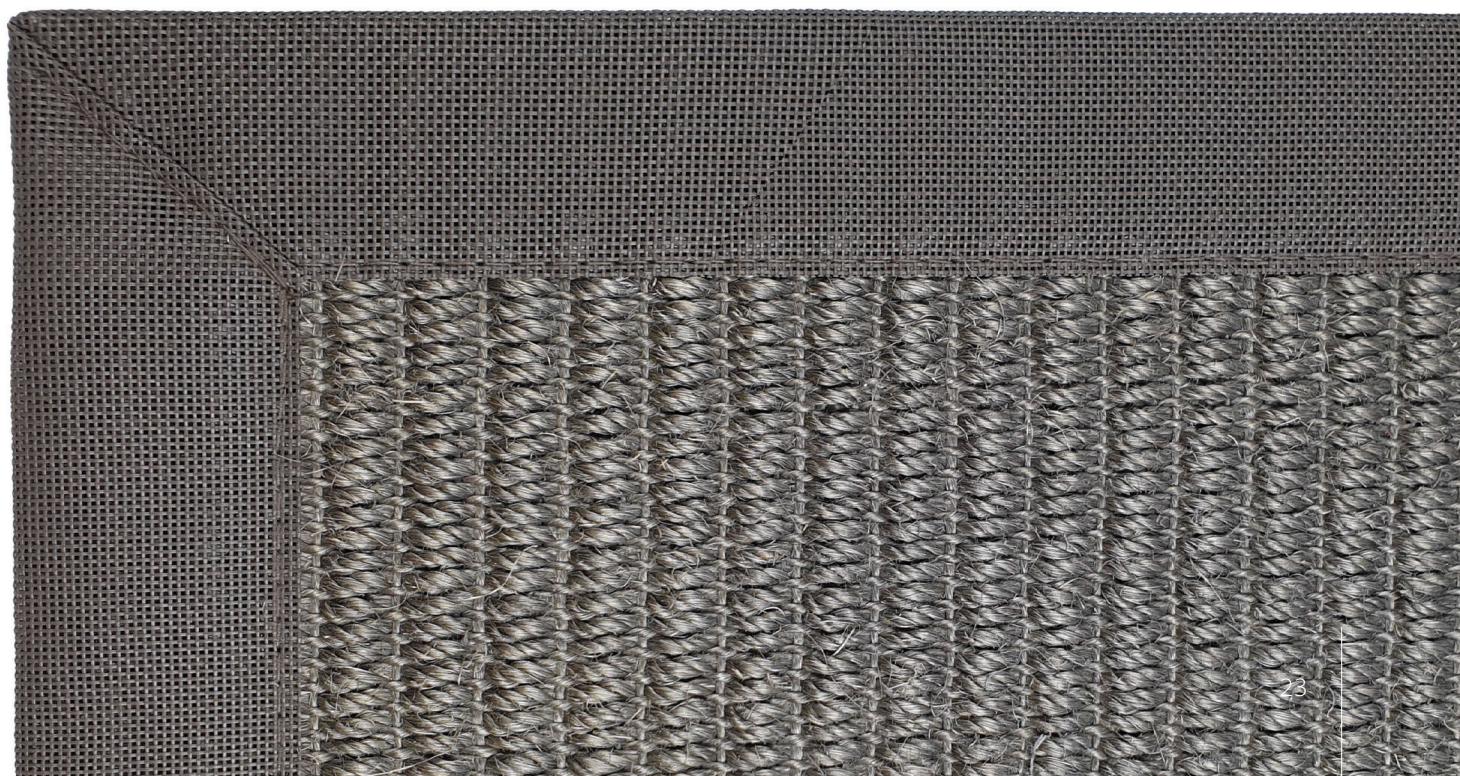
taupe



INDOOR | OUTDOOR

BEST CHOICE FOR OUTDOOR RUGS

Carpet: Sisal NAIROBI ref. 9276 | Border: TREND ref. Taupe | Type of Finish: BASIC | Width: 5,5 cm



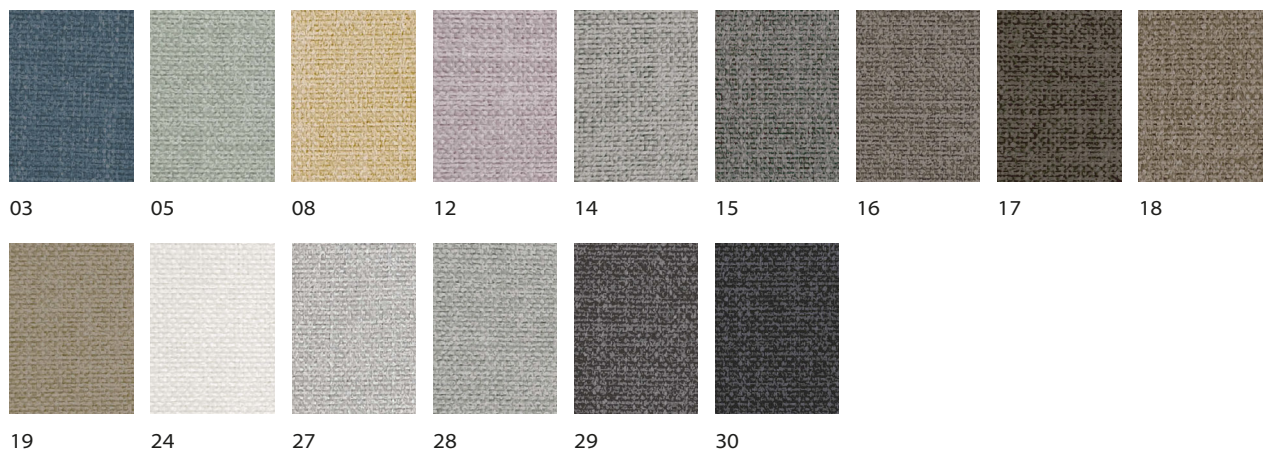


# BORDERS TYPE OF FINISHES

---

## SMART

COMPOSITION  
100% POLYESTER



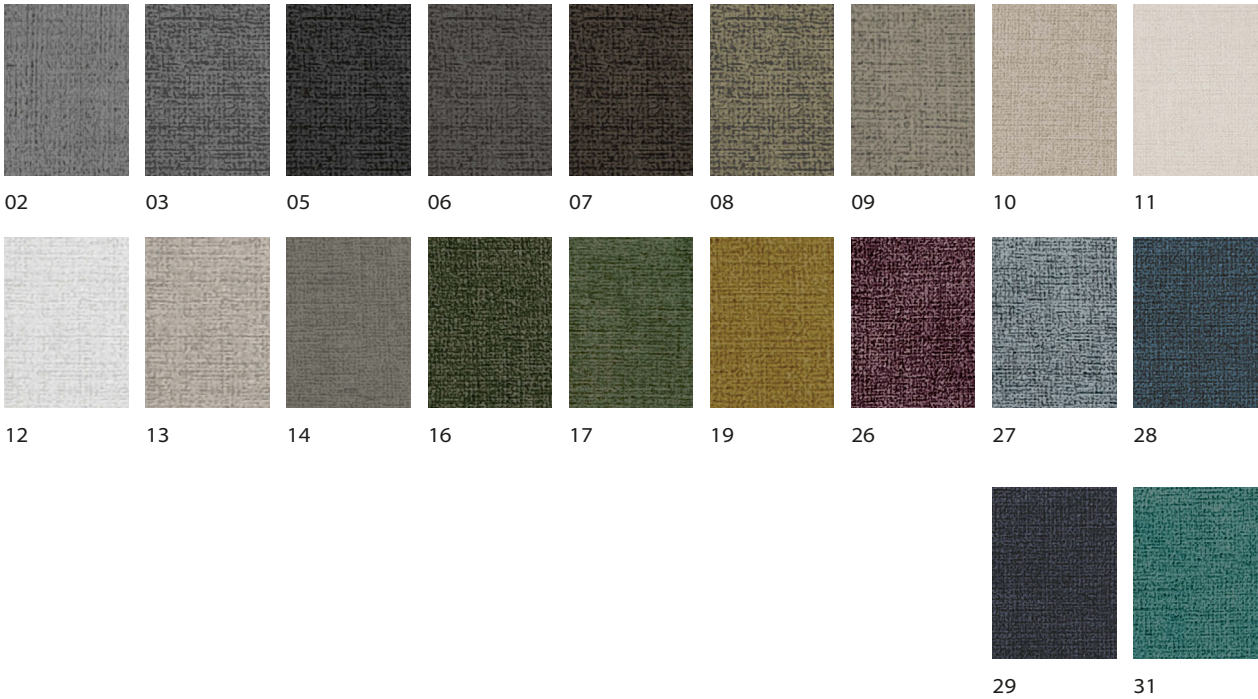
Carpet: **SOFT FEELINGS** ref. 8605 | Border: **SMART** ref. 28 | Type of Finish: **BASIC** | Width: 3 cm





# VOGUE

COMPOSITION  
100% POLYESTER



Carpet: **SOFT FEELINGS** ref. 8605 | Border: **VOGUE** ref. 05 + 06 | Type of Finish: **DOUBLE** | Width: 3 cm + 1,5 cm





# BORDERS TYPE OF FINISHES



## PEACH

COMPOSITION  
100% POLYESTER



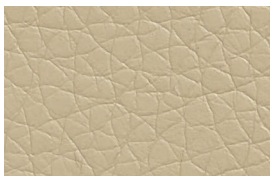
Carpet: **Sisal NAIROBI** ref. 9275 | Border: **Peach** ref.5 | Type of Finish: **PRESTIGE SPECIAL** | Width: 8 cm



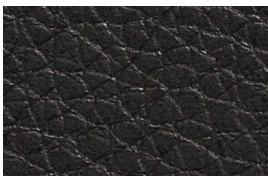


# STYLE

COMPOSITION  
100% PVC



beige



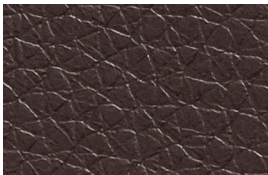
black



brown



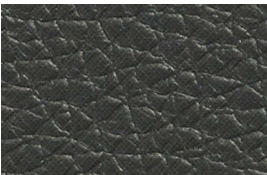
camel



chocolate



grey



mouse

Carpet: PERLA ref. 105 | Border: STYLE ref. chocolate | Type of Finish: ELITE | Width: 8 cm









# THE RIGHT DIMENSIONS For Your Rug or Runner

---

Some recommendations with reference to the measurement and dimensions you can use for your rugs based on location and usage.





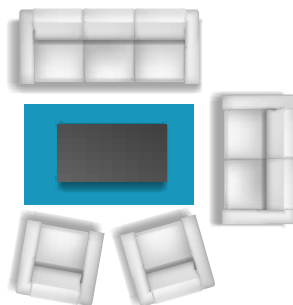
## THE RIGHT DIMENSIONS For Your Rug or Runner

Equally as important as selecting the style, material and colour is matching the dimensions of your rugs for the location you have chosen.

The rug helps us to define areas, separate rooms and develop more perceptible space within your home, contributing significantly to the visual effect of the environment.

However an incorrect choice of measurement can have a detrimental effect so it is essential to accurately determine the size you require. The final decision is of course yours and to be helpful, may we offer you the following recommendations based on a selection of locations.

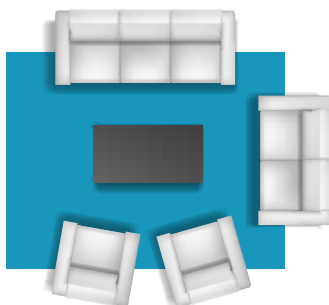
### LIVING ROOM



#### CENTRAL RUG BETWEEN FURNITURE

Recommended for not too large a space, the rug is placed in front of the sofas and is aligned with the furniture in the room having regard for any permanent features such as fireplaces etc.

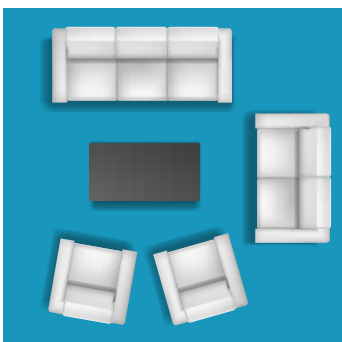
The rug should be at least the width of the sofa with an excess of 25 cm each side.



#### RUG UNDERNEATH FURNITURE

Where a large rug is required, it allows the front legs of the furniture to be located approximately 15 to 20 cm inside the rug.

The weight of the furniture will hold the rug in place so that when rising up from the sofa, the rug will not wrinkle.

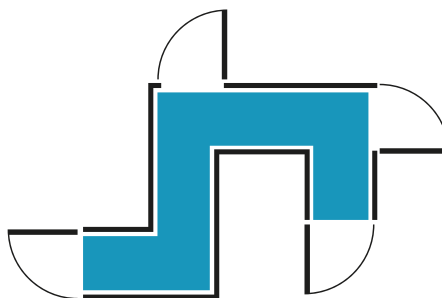


#### LARGE RUGS THAT COVER MOST OF THE ROOM

In the case of sizeable rooms, a large format rug is recommended to project the living space. This should be placed at least 15 cms away from the perimeter walls and other permanent fixtures.

Remember to take account of door clearance.

### RUNNERS



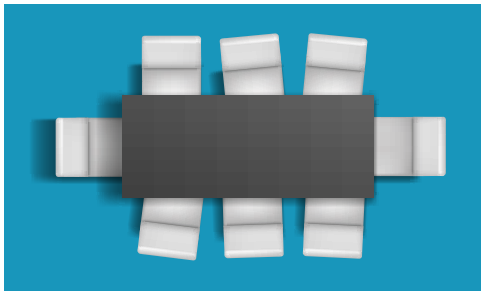
Leave the runner at least 5 cm from the perimeter walls and other permanent fixtures that exist as standard runner measurements are between 70-90 cm wide.

Remember to take account of door clearance





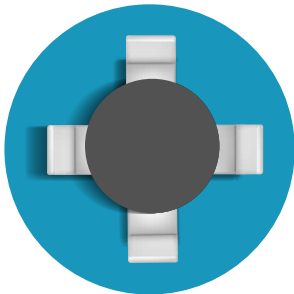
## DINING ROOM



### RECTANGULAR OR SQUARE TABLE

We recommend that rugs for the dining room be of a similar shape to your table. The rug should be large enough so that when you rise from the chair the back legs never sit outside the rug.

We suggest a minimum of 75 cm excess on each side of the table.



### CIRCULAR TABLE

Your rug should ideally resemble the same shape as the table and be large enough so that when you rise from the chairs they remain on the rug.

To do so we suggest a minimum excess of 75 cm on each side of the table.

## ENTRANCE RUG



Quite often this space is covered by the sweep of the door at the entrance to your home. You should therefore ensure that there is sufficient door clearance and that the door remains a sufficient barrier to outside influences. Place the rug at least 5 cm away from perimeters and other permanent fixtures.

## BEDROOM



### TRIPLET OF RUGS AROUND THE BED

It is important to have the same width or a slightly larger width rug than that of the front of the bed.

Calculate a minimum depth to the rug of between 50 and 80 cm depending on the space available at the foot of the bed.

Take into consideration the width of any piece of furniture around the bed such as bedside tables.

Leave a minimum width of 50 cm depending on the space you have next to the bed.

Remember that a smaller rug may be better suited to a narrower visible edge.



### "U" SHAPE

A variation of the previous concept is a custom U shaped rug. It is important to take into account the recommendations of the previous section.

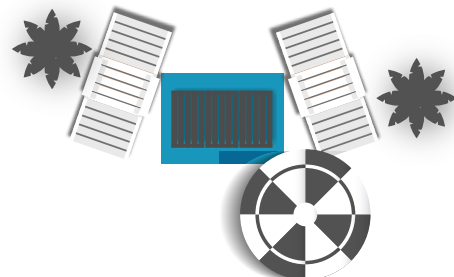


### UNDERNEATH AND AROUND THE BED

This is suitable for larger bedrooms. We recommend that the rug also covers any auxiliary furniture that is around the bed and that it fits appropriate dimensions.

These rugs are better suited to a greater width of the visible edge. Remember if necessary to check all door clearances.

## OUTDOOR RUGS



It is most important that your chosen rug is suitable for outdoors and is resistant to wear by sunlight and water. Wherever you place your outdoor rug, on a porch, terrace or patio, please consider all relevant recommendations from previous locations.





Carpet | PURE FEELINGS ref. 8303  
Finish | JUST





# TAKE A LOOK AT OUR EXAMPLES

---





Carpet | Sisal NAIROBI ref. 9277  
Finish | JUST



Carpet | Sisal ACRA ref. 8042  
Finish | FOLD





Carpet | WOOL MARBLE ref. 7002  
Finish | FOLD



Carpet | TITAN HL NATURE ref. 7702  
Finish | YARN-OVERLOCK



Carpet | NEVADA NATURE ref. 7403  
Finish | YARN-OVERLOCK

Carpet | PORCH ref. 618  
Finish | BORDER TREND





---

Carpet | SOFT FEELINGS ref. 8616  
Finish | MICRO-OVERLOCK









Carpet | FLORENÇA ref. 92  
Finish | PERLON



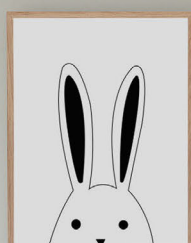
Carpet | WOOL DIAMOND ref. 5502  
Finish | MICRO-OVERLOCK







Carpet | SISAL ACRA ref. 8042  
Finish | FOLD



Carpet | SATIN ref. 418  
Finish | PERLON





Carpet | SENSATION ref. 9708  
Finish | PERLON



Carpet | SENSATION ref. 9708  
Finish | PERLON





Carpet | SOFT FEELINGS ref. 8603  
Finish | JUST

Carpet | SOFT FEELINGS ref. 8604  
Finish | PERLON



Carpet | SOFT FEELINGS ref. 8603  
Finish | JUST

Carpet | SOFT FEELINGS ref. 8604  
Finish | PERLON



Carpet | SIENA ref. 48  
Finish | INVISIBLE





[www.lusotufos.pt](http://www.lusotufos.pt)  
[lusotufos@lusotufos.pt](mailto:lusotufos@lusotufos.pt)

Lusotufos S.A.  
Rua Olívia e Florindo Cantinho, 290  
3885-317 Cortegaça - Ovar - Portugal  
telef. | phone: (+351) 256 750 500  
fax: (+351) 256 750 504