

# EXTREME RUGS



EDITION 2018

lusotufo®  
rugs & carpets for life









# EXTREME RUGS

Unleash your CREATIVITY

---

EXTREME rug plays a decisive role in interior decoration, being different and irreverent, it is capable of transforming environments and make the difference in personalized spaces with extreme originality!





## CUSTOMIZED DESIGN

From the union of different carpets, a unique and personalized piece is born, allowing the client to choose the design, the colour and texture that will compose the rug.







## VERSATILITY OF SHAPES

The EXTREME rug is versatile in the formats and finishes. The customer can choose a more usual shape, such as rectangular, square, circular and oval, or can idealize an irregular and asymmetric format.



# HOW TO DEVELOP AN EXTREME RUG

## STEP-BY-STEP



### STYLE, DRAWING AND MATERIALS PROPOSED BY THE COSTUMER

The client choose a style and a design for their rug, simultaneously the colour, the materials and the suitable finishes.



### DEVELOPMENT AND FREE DESIGN

Following is the development of the rug design in the computer, run for free by the LUSOTUFO design team.



### BUDGETING

The value of the rug is calculated considering the material needed by colour and article, and the estimated time and cost of labor.





### CUT OF THE CARPETS IN CAD SYSTEM

After the approval from the costumer, is followed the automated cutting process made in CAD/CAM system.



### ASSEMBLING

The rug is assembled manually by ordering the parts together and it is placed the lining and finishing.



### QUALITY CONTROL AND PACKAGING

Once assembled and finished, the rug goes through the quality verification process. After approval, the item is photographed, packaged and shipped to the customer.



### TIME OF EXECUTION AND DELIVERY TIME

Despite the manual assembly of the article, the running time of the Extreme rug is relatively short, on average it takes about 4 to 6 weeks.









## A RUG WITH STYLE

Extreme can be designed and built  
in different styles and patterns.

Select what you think is the most appropriate  
to your project or to your home:

### Comtemporary

Classics

Stripes

Triangles

Mosaics

Flowers

Trellis

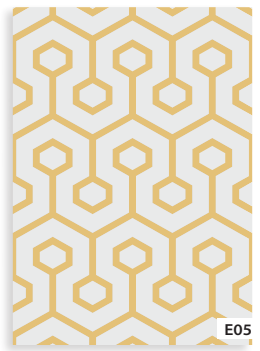
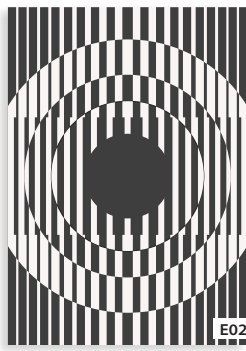
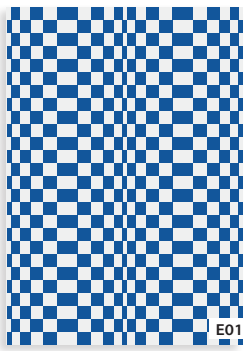
Abstract

Children's

Logos

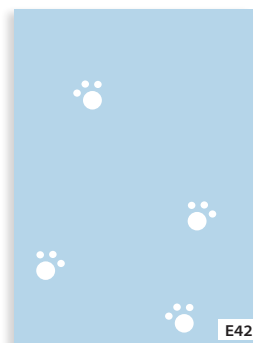
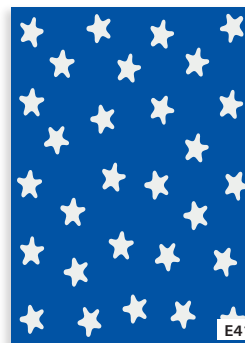
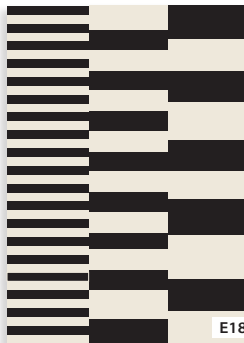
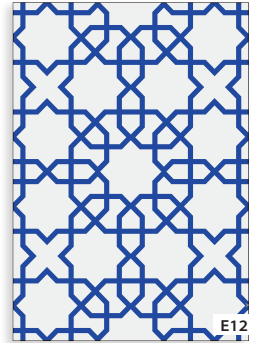
Letters





# BE INSPIRED

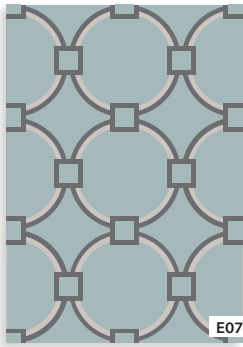
WITH OUR EXAMPLES...



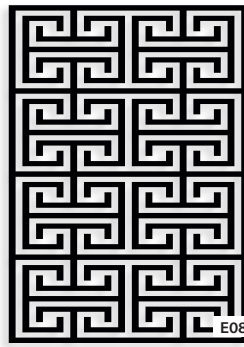




E06



E07



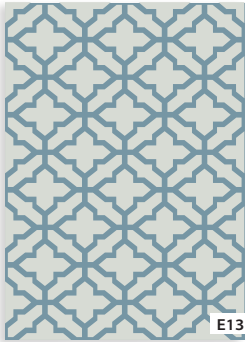
E08



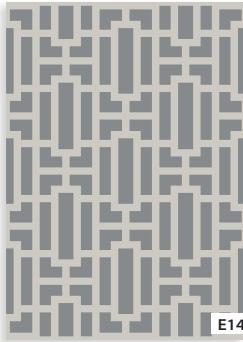
E09



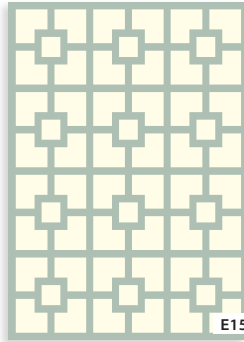
E10



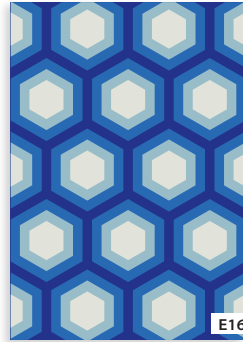
E13



E14



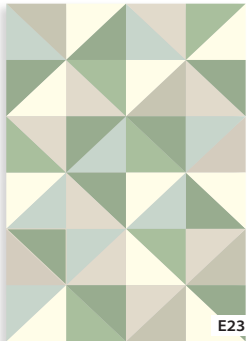
E15



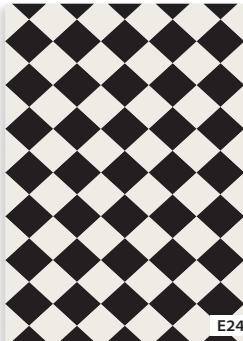
E16



E17



E23



E24



E25



E26



E27



E33



E34



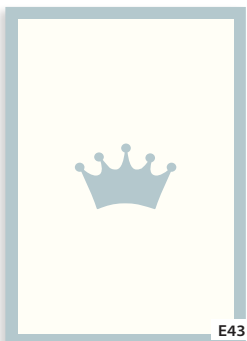
E35



E36



E37



E43



E44



E45



E46



E47














Luso  
rugs & carpets



A modern office interior featuring glass partitions, wooden floors, and ergonomic chairs. The scene is brightly lit, with light streaming in from large windows. In the foreground, a dark grey carpet mat with the 'tufo' logo and the tagline 'pets for life' is partially visible. The background shows a clean, minimalist workspace with glass walls and wooden desks.

tufo®  
pets for life





















lusotuf<sup>®</sup>  
rugs & carpets for life



[www.lusotuf.pt](http://www.lusotuf.pt)  
[lusotuf@lusotuf.pt](mailto:lusotuf@lusotuf.pt)

Rua Olívia e Florindo Cantinho, 290  
3885-317 Cortegaça - Ovar - Portugal  
telef.: (+351) 256 750 500  
fax: (+351) 256 750 504