



CONTRACT CARPETS

lusotufo®
rugs & carpets for life

INDEX

04	COMPANY
06	SERVICE
08	OPTIONAL TREATMENTS
10	GRAPHICS
40	AXMINSTER
72	PRINTED
98	TILES
102	RUGS
122	PORTFOLIO
124	TECHNICAL INFORMATION





COMPANY

LUSOTUFO

Encompassing more than 80 years of experience and expertise, Lusotufo is the largest floorcovering group in the Iberian Peninsula and is capable of developing and supporting a wealth of solutions in the decorative market. Its core business is focused in the field of wall to wall carpet, rugs, sisal, synthetic laminate flooring and decorative fabrics.



80 years
providing solutions

Our vast collection provides a quality solution for a variety of styles and tastes incorporating a combination of materials, textures and finishes.



SERVICE



It is Lusotufo's main concern to present its customers with the best solutions in a way that the style and performance of wall to wall carpets are adapted to the characteristics of the project.

Our company is specially oriented to provide personalised design projects, from traditional elegance to a minimalistic style.

The capacity and flexibility of our Production Division combined with the technical service of specialised design team, allows us to provide personalised solutions of wall to wall carpets and rugs for all kinds of projects and for all dimensions at competitive prices.

The portfolio of modern and traditional designs provides the initial inspiration, that can however be adapted. Although we possess an abundance of designs with available options, we also offer a complete service that allows the creation of original designs, adjusted to customer needs.

We can supply you with specific solutions for interior designers, architects and constructors with complete solutions to accommodate demanding building patterns of any commercial, public or private scenario.

As part of our personalised design service, Lusotufo develops CAD simulations, presenting colours and textures as defined by the customer.

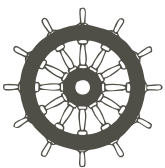
As necessary, we supply samples produced in the "Kibby" robot machine dedicated to the production of high precision prototypes.





OPTIONAL

IMO



UNSETTLED WATERS REQUIRE SPECIALISED AND HIGH QUALITY CARPETS

Seagoing vessels require flooring with very specific characteristics and Lusotufu offers carpets that meet diverse requirements such as the all important fire resistance classification as defined by the International Maritime Organisation* (IMO) for marine carpet enabling Lusotufu marine floorcovering to be installed in any craft regardless of size.

Carpets play a very important role in the interior environment of these vessels providing welfare and comfort for crew and passengers alike, ensuring a warm and pleasant environment and substantially enhancing the acoustic and thermal behaviour of cabins and common areas. The quality and diversity of Lusotufu marine carpet facilitates easier decision making by architects, designers and engineers.

At Lusotufu there is always a solution for your space!

* IMO, the International Maritime Organisation is the United Nations specialised agency responsible for the protection and safety of shipping and the prevention of maritime pollution from shipping. (visit website <http://www.imo.org/>)



SCOTCHGARD

TREATMENTS



THE BEST WAY TO PROTECT
YOUR CARPET FROM SPILLS
STAINS AND DIRT

Scotchgard treatment is the best way to protect your carpet from spills, stains and dirt.

Scotchgard forms an invisible shield around every fibre, keeping your furnishings looking fresh and making them easier to clean and care for.

Scotchgard is extremely durable and gives lasting protection even in the most demanding conditions.

Scotchgard does not alter the colour, texture or flame retardancy, so even the most delicate silks can be treated with confidence.

Anti-static agents prevent the attraction of dry soils to carpets and fabrics, ensuring quick and effective everyday cleaning.

Spills are simply mopped up by absorbent paper or a clean towel – even dried in stains are easy to remove.



	COPPER	SILVER	GOLD	PLATINUM
	General Commercial	General Commercial	Heavy Commercial	Heavy Commercial
Construction	Tufted, Cut Pile			
Composition	80% Wool + 20% Polyamide			
Pile Weight	1.000g/m²	1.200g/m²	1.400g/m²	1.600g/m²
Pile Height	7,5mm	7,5mm	8,0mm	8,5mm
Backing	Jute			
Width	4,00m & 5,00m			

GRAPHICS

SIMPLE DESIGNS

Simple geometric designs, using 2, 3 or 4 colours, provide the option for a significant variety of patterns and colour variants.

In the pictures displayed we can observe the computer generated graphics and the correspondingly produced wall to wall carpet.



VIRTUAL

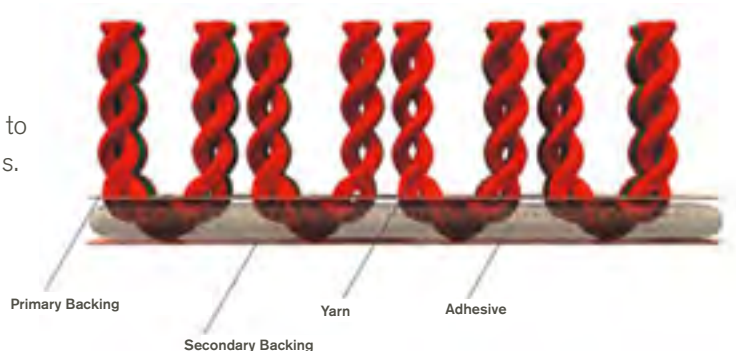


REAL

Flexibility in manufacturing, generates wall to wall carpets with patterns that are simple and exclusive.

This is the most universal method using a simultaneous needle yarn system on a polypropylene backing.

Flexibility in the appearance through the intermingling of different colours, textures and types of yarns permits the manufacture of wall to wall on a bespoke basis, with exclusive patterns.







GRAPHICS
2 COLOURS



GRAPHICS
3 COLOURS



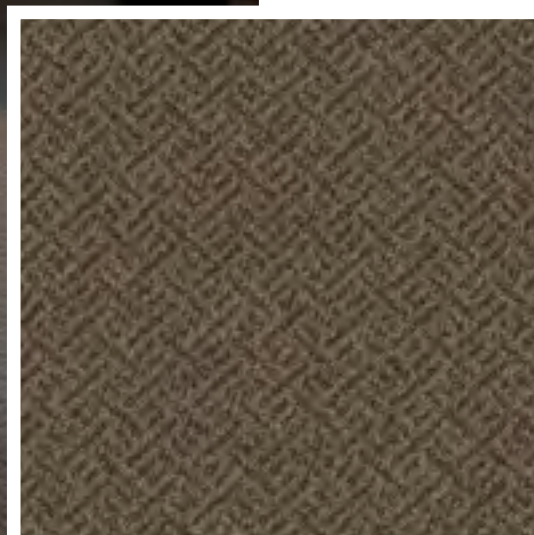


HF Ipanema Porto Hotel ★ ★ ★ ★

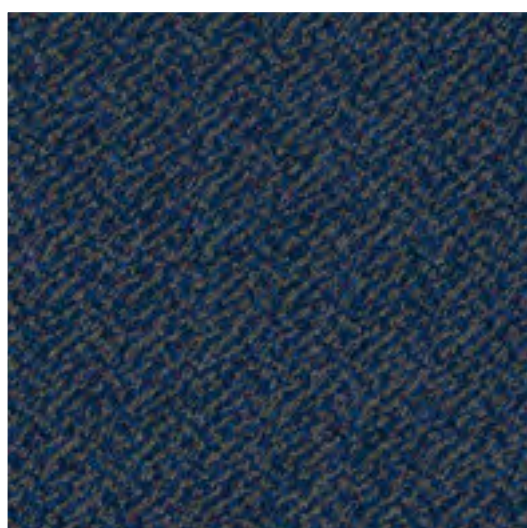




GRAPHICS
2 COLOURS



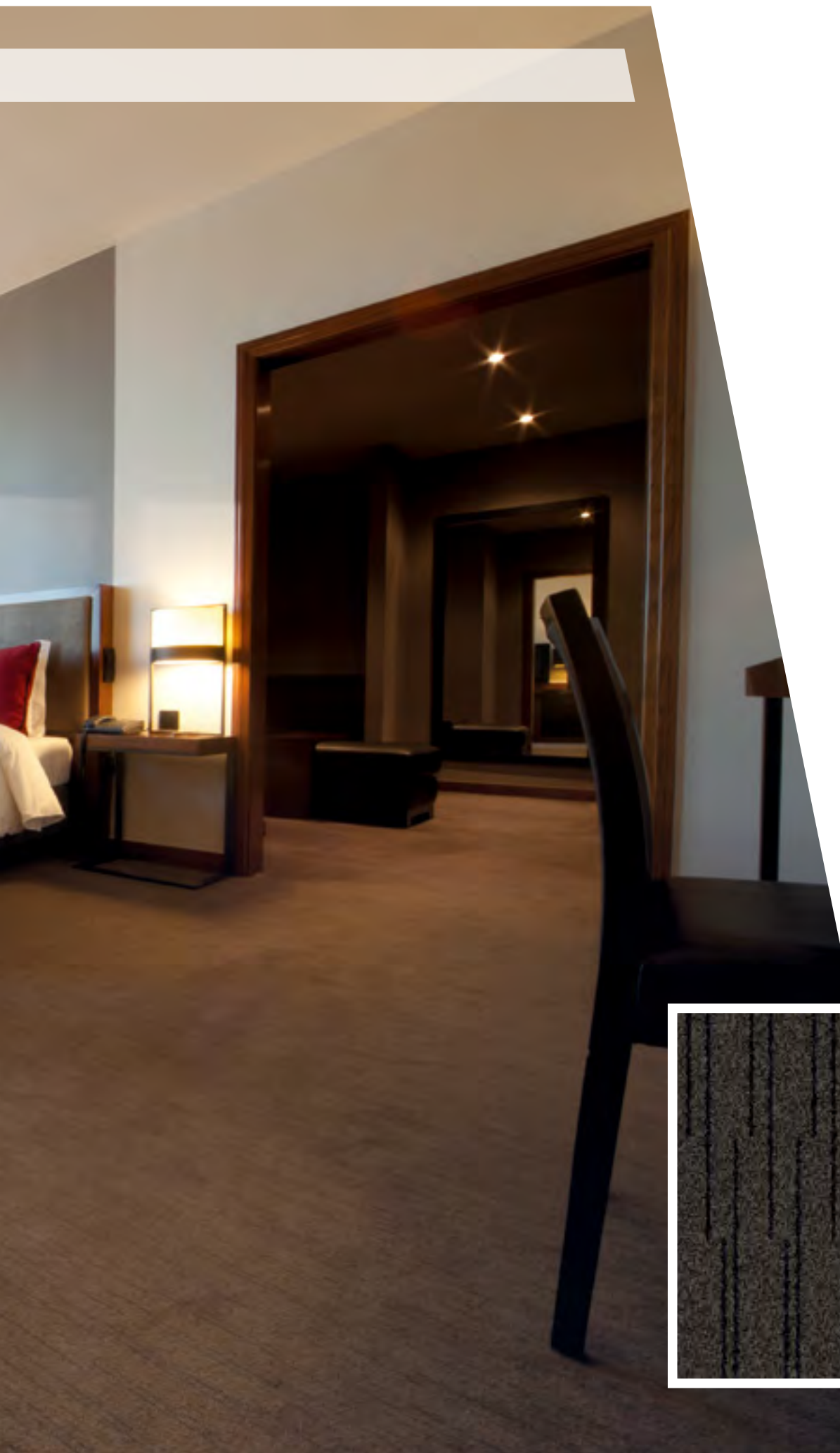
GRAPHICS
3 COLOURS



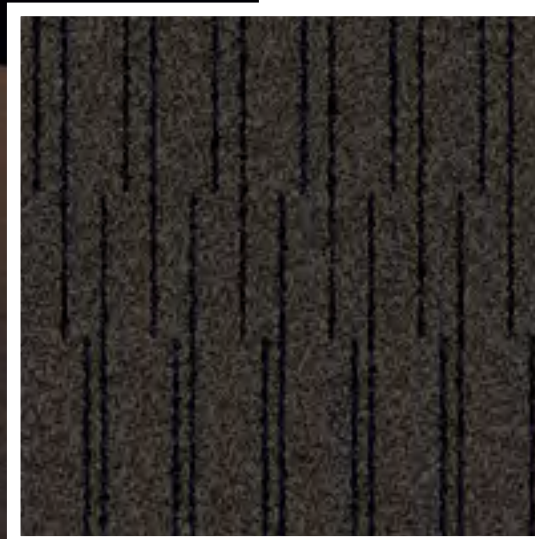


Hotel Dighton ★ ★ ★ ★ ★





GRAPHICS
2 COLOURS



GRAPHICS
2 COLOURS





Sheraton Porto Hotel & SPA ★ ★ ★ ★ ★





GRAPHICS
2 COLOURS



GRAPHICS
3 COLOURS

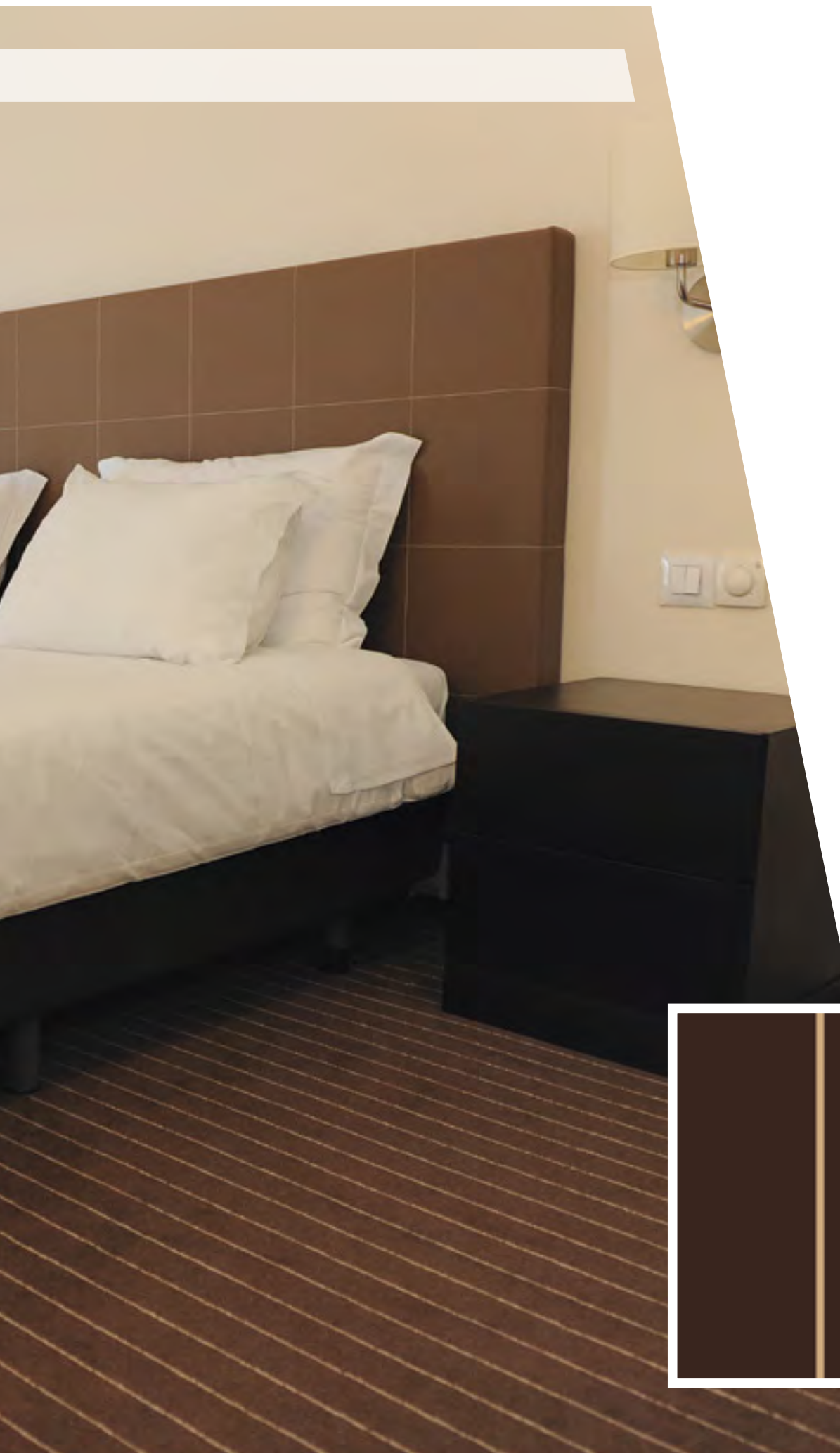


HF Ipanema Porto Hotel ★★★★★

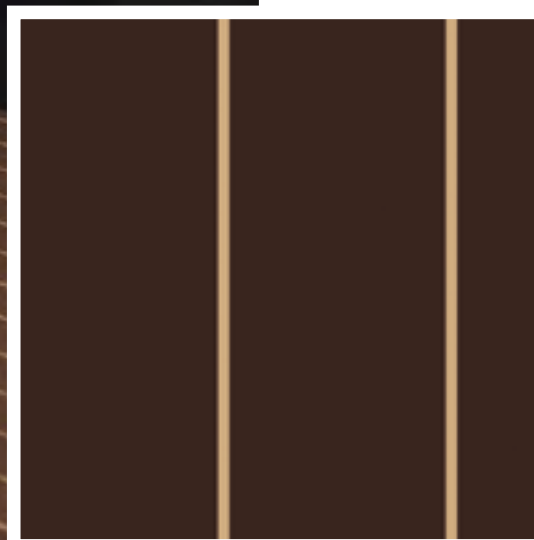


Hotel Girassol ★ ★ ★ ★

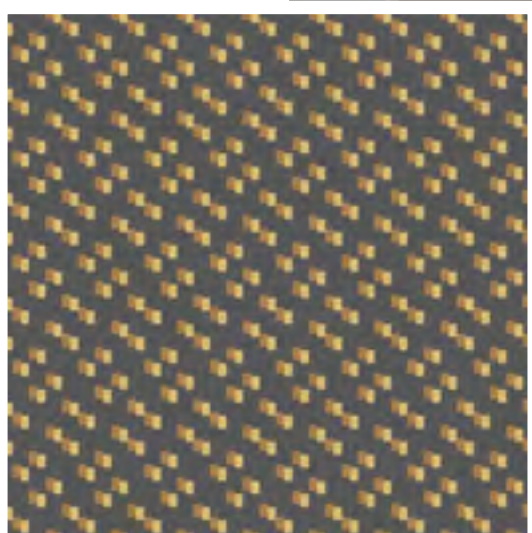




GRAPHICS
2 COLOURS



GRAPHICS
3 COLOURS

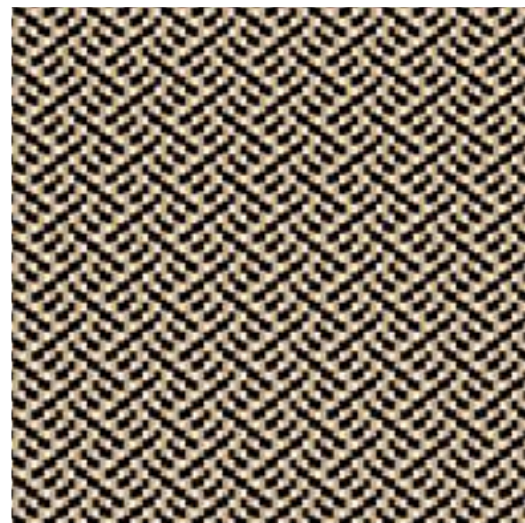




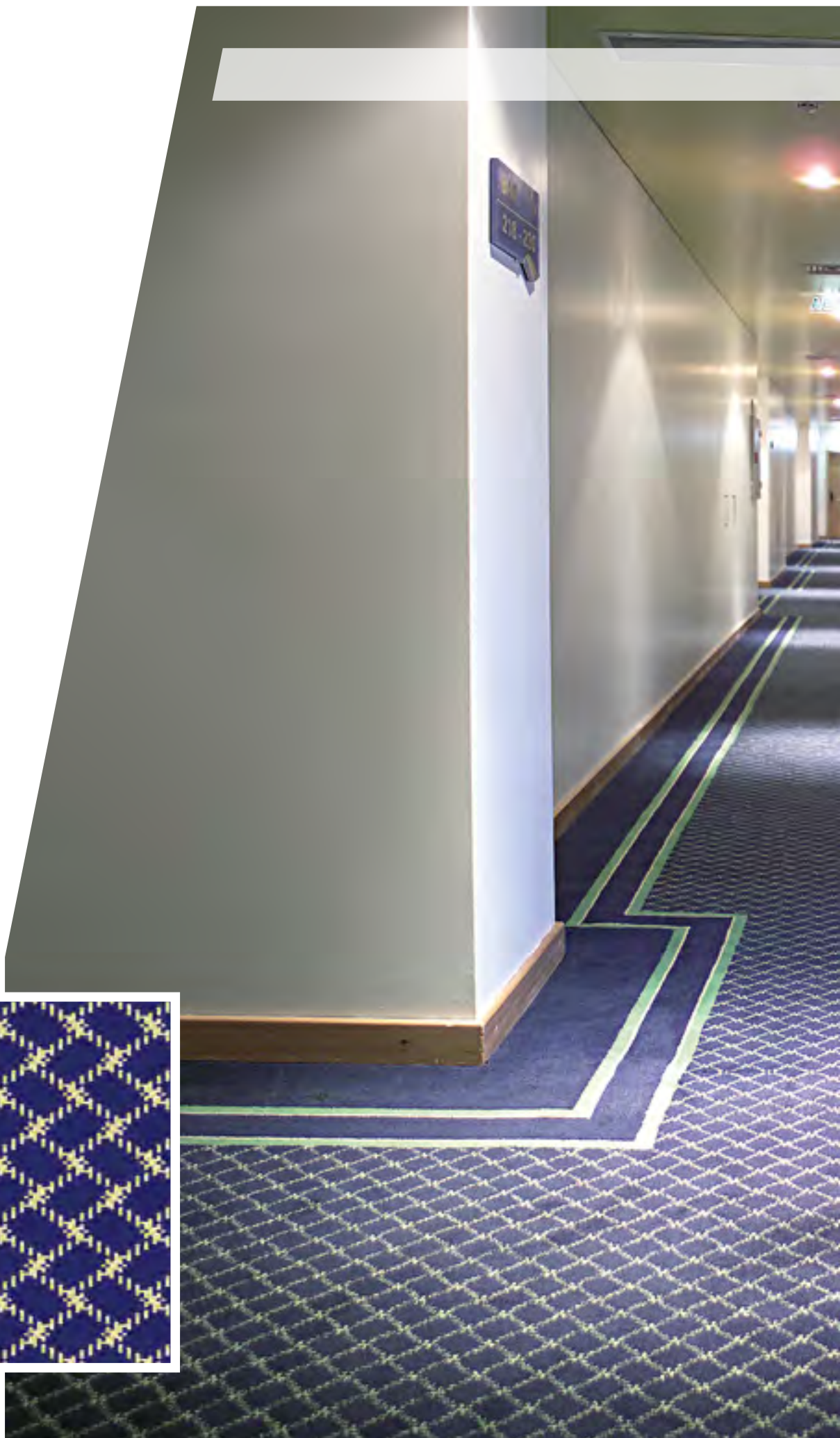
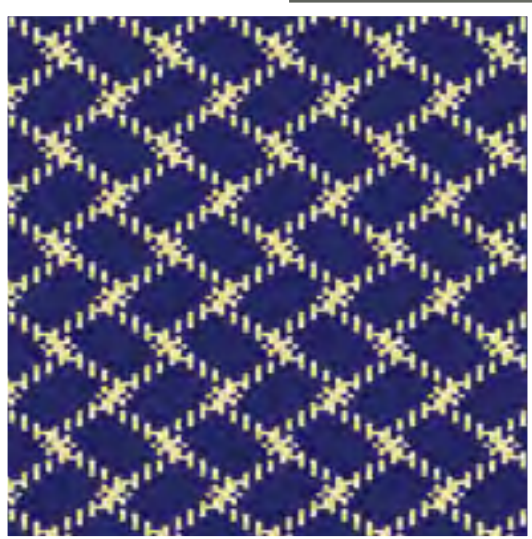




GRAPHICS
3 COLOURS



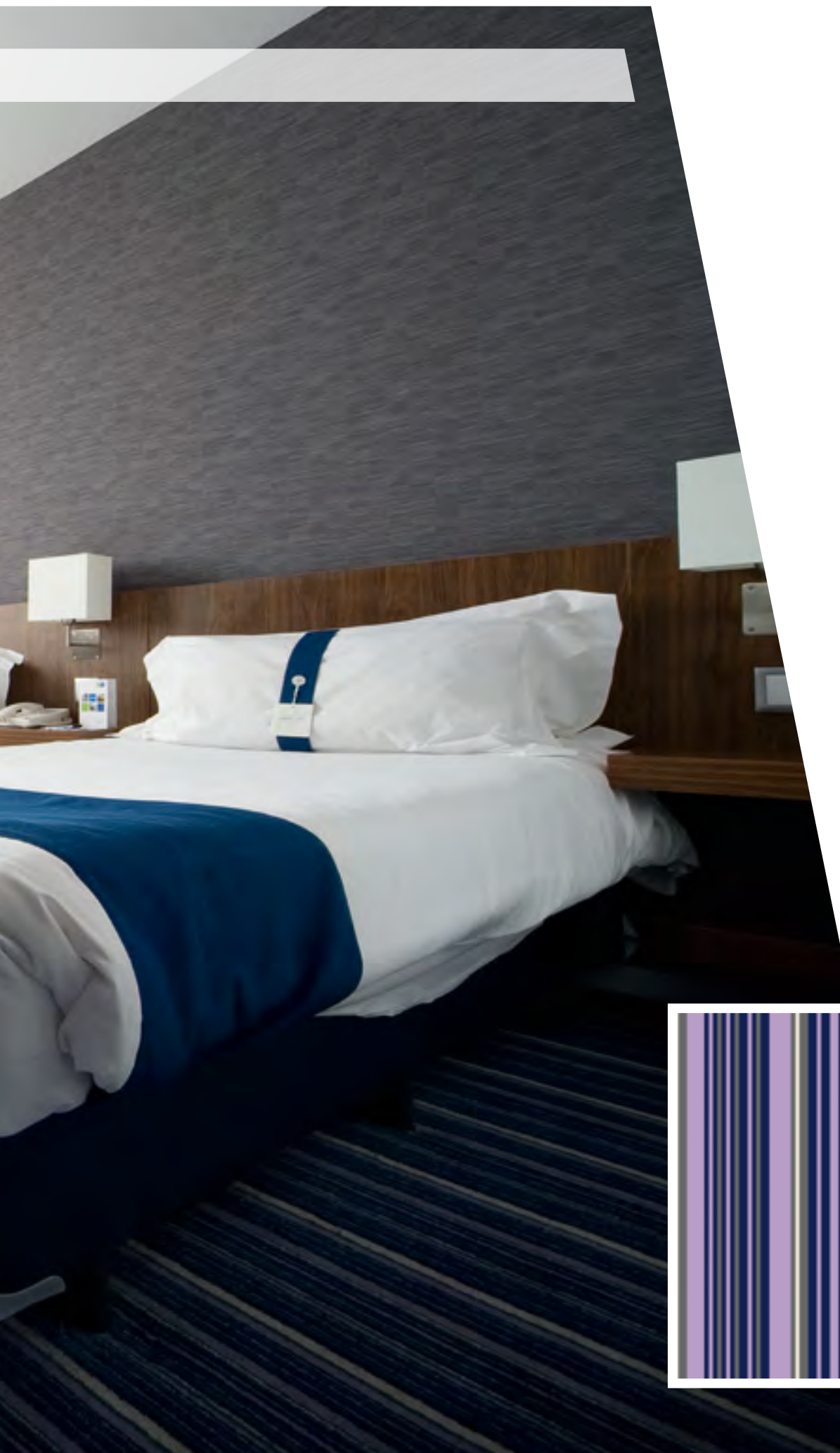
GRAPHICS
3 COLOURS



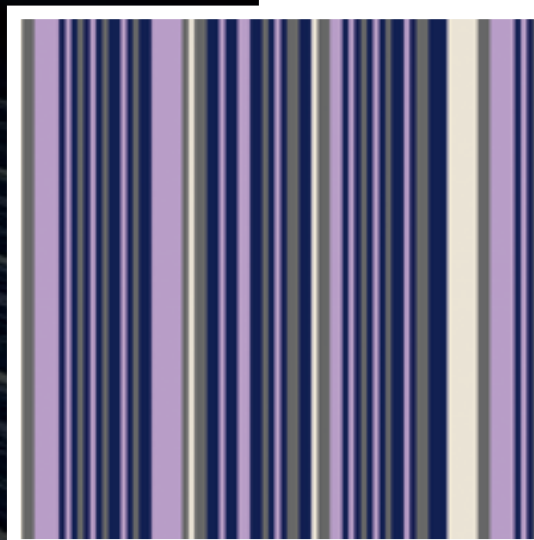


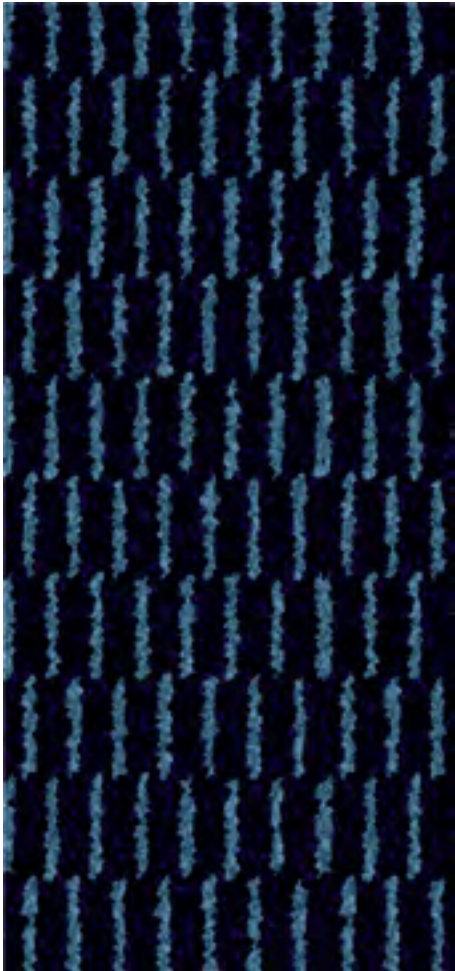
Holiday Inn Express Lisbon Airport ★ ★ ★





GRAPHICS
4 COLOURS





G1



G2



G3



G4



G5



G6



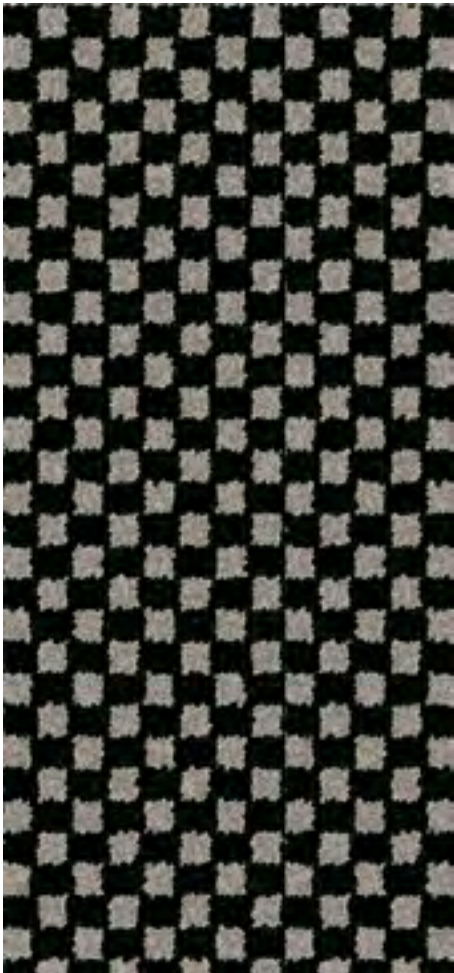
G7



G8



G9



G10



G11



G12



	COPPER	SILVER	GOLD	PLATINUM
	Heavy Commercial	Heavy Commercial	Heavy Commercial	Heavy Commercial
Construction	Woven, Cut Pile			
Composition	80% Wool + 20% Polyamide			
Pile Weight	1.225g/m²	1.380g/m²	1.530g/m²	1.680g/m²
Pile Height	7,5mm	7,5mm	7,5mm	7,5mm
Backing	PVA			
Width	3,66m - 4,00m			

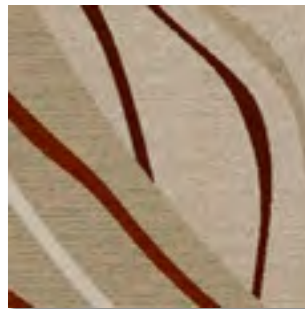
AXMINSTER

SOPHISTICATED DESIGNS

Axminster wall to wall carpets are installed in thousands of hotels, casinos, cruise liners, commercial buildings and private homes throughout the world.

16 colour availability introduces significant flexibility.

In the pictures displayed we can observe the computer generated graphics and the correspondingly produced wall to wall carpet.



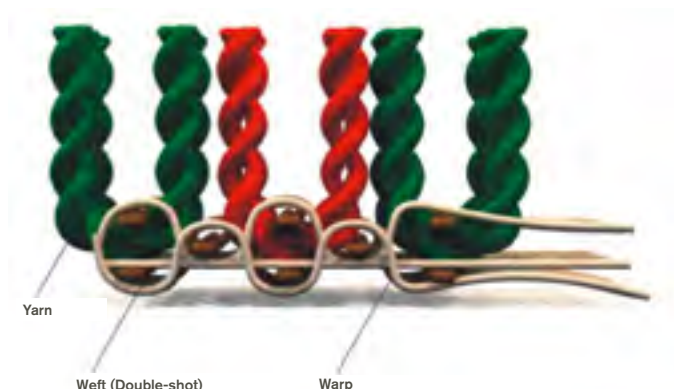
VIRTUAL



REAL

Quality, luxury and durability allow the development of wall to wall carpets with truly remarkable quality and definition.

This production method is commonly associated with quality, luxury and durability. Design options are almost endless.



Axminster wall to wall carpets are woven in a means whereby the yarn is inserted into the backing during the woven process.

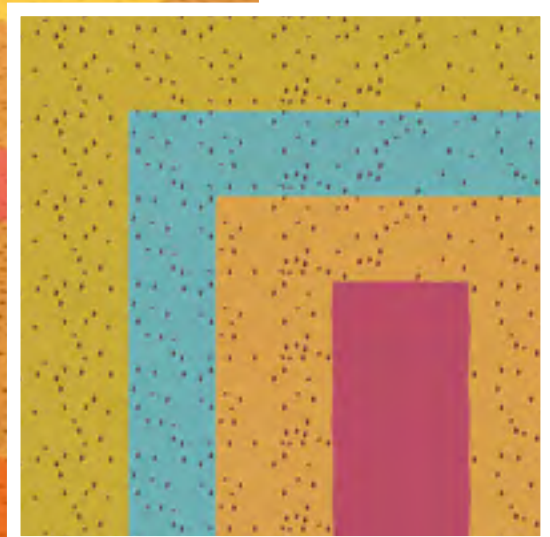
Each "U" tuft is held in place by the backing.

Arrábida Shopping





AXMINSTER
5 COLOURS



AXMINSTER
5 COLOURS



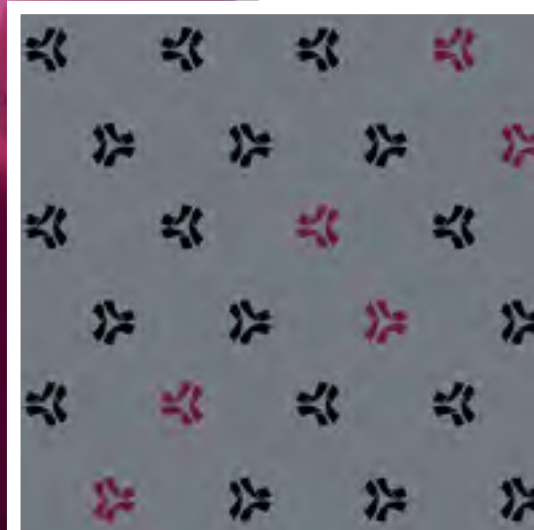


Hotel Sintra Bliss House





AXMINSTER
3 COLOURS



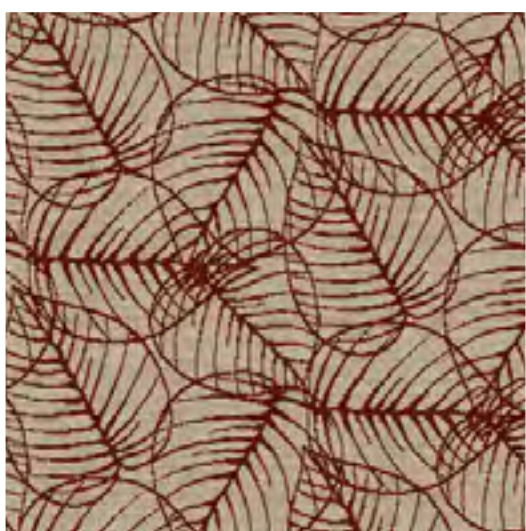




AXMINSTER
3 COLOURS



AXMINSTER
7 COLOURS

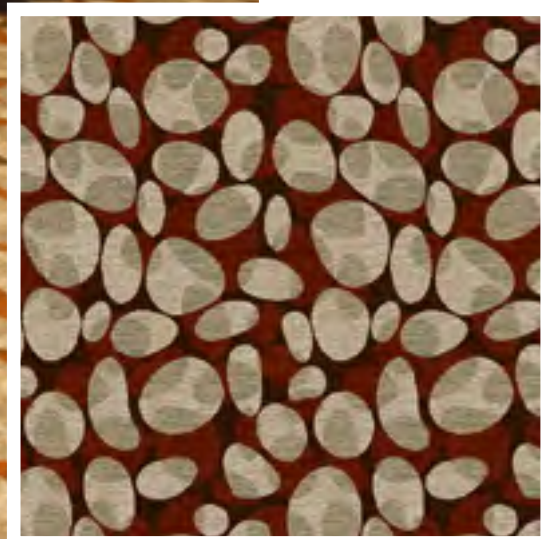








AXMINSTER
6 COLOURS



AXMINSTER
4 COLOURS





Queen Isabel (Douro Azul)



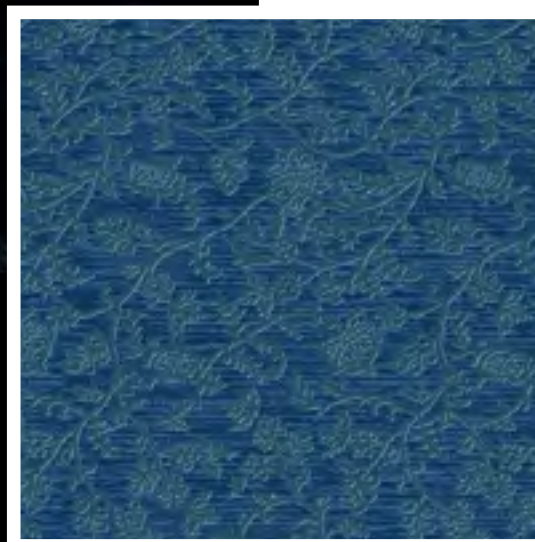


Queen Isabel (Douro Azul)

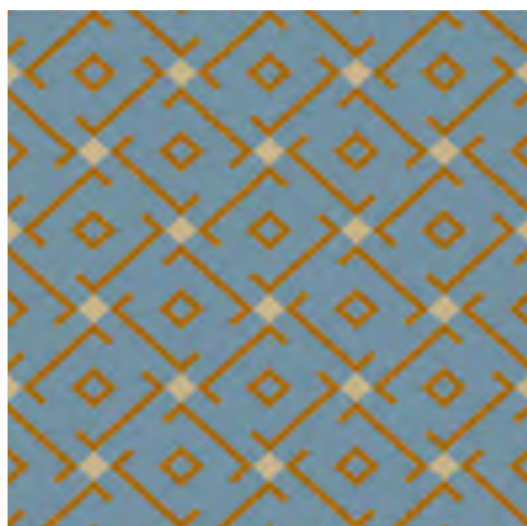




AXMINSTER
3 COLOURS



AXMINSTER
3 COLOURS



Hotel Pestana Carlton Madeira ★★★★★

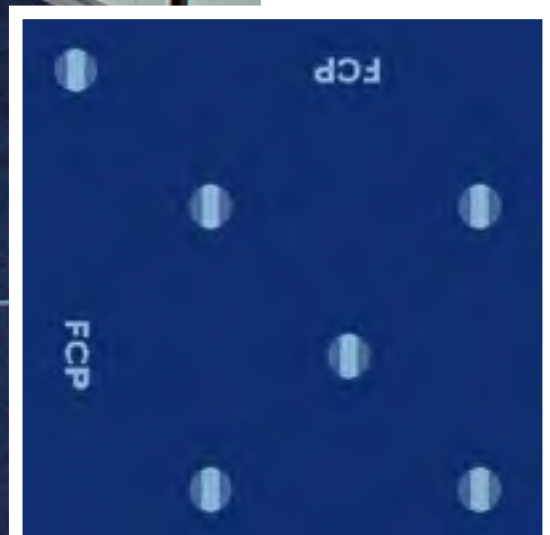


F.C. Porto - Estádio do Dragão

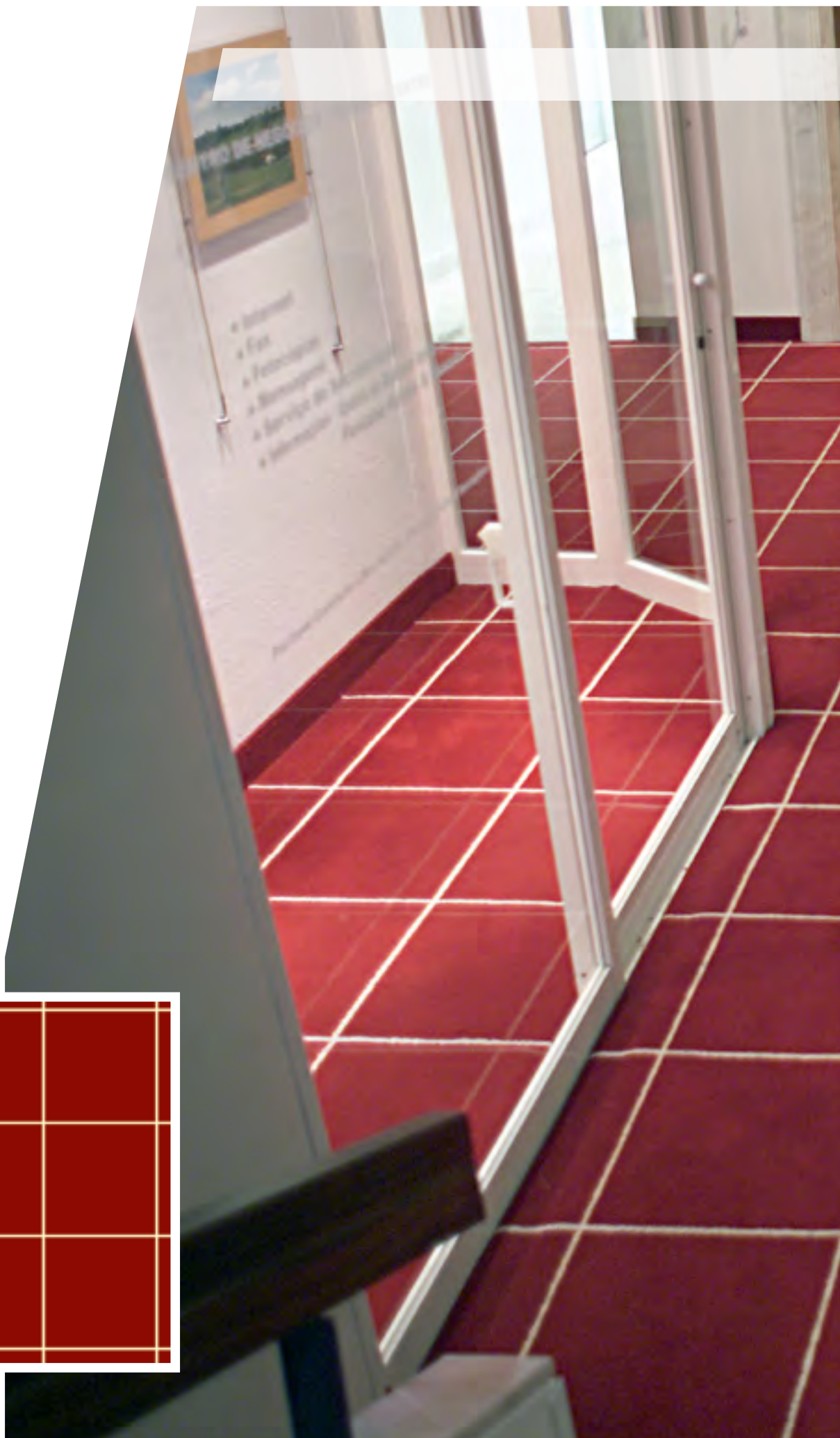
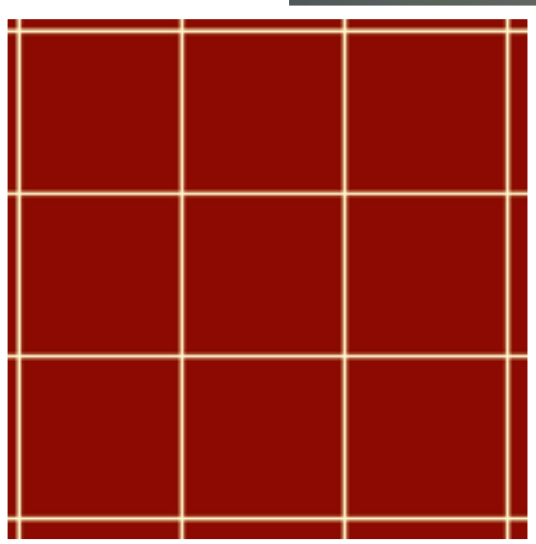




AXMINSTER
2 COLOURS



AXMINSTER
2 COLOURS

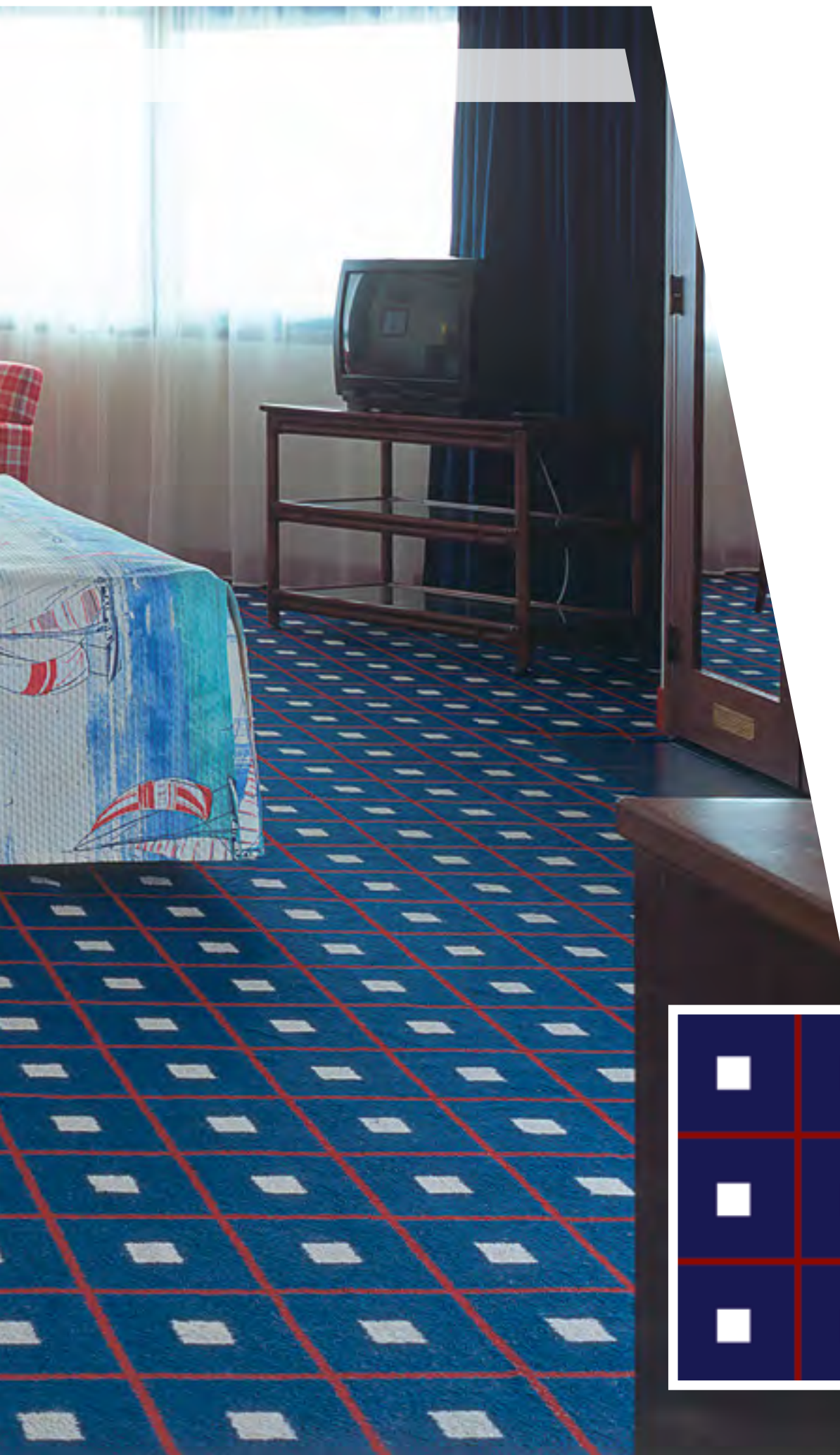


Pestana Cascais (Atlantic Gardens) ★ ★ ★ ★

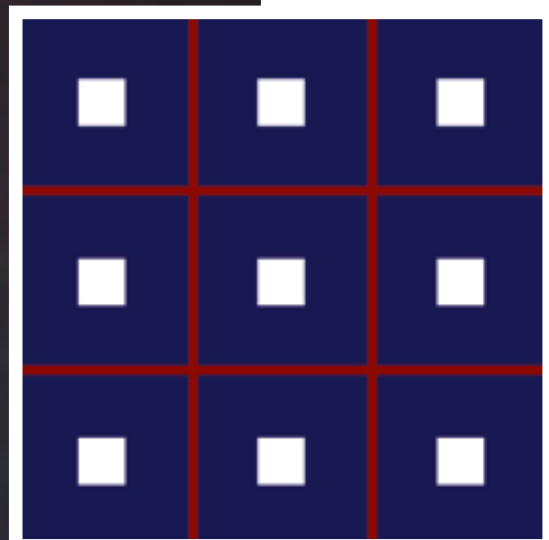


Pestana Cascais (Atlantic Gardens) ★ ★ ★ ★

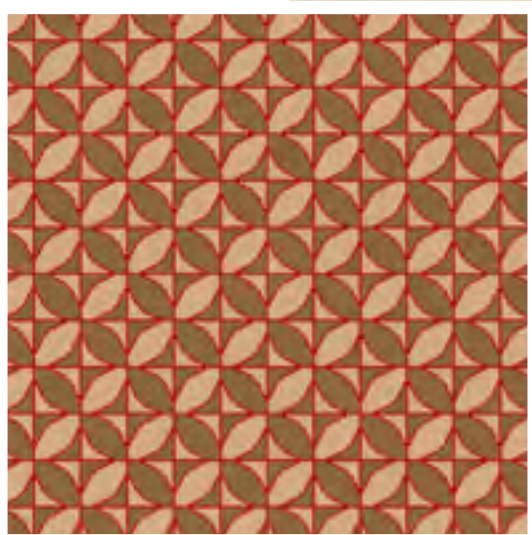




AXMINSTER
3 COLOURS



AXMINSTER
3 COLOURS



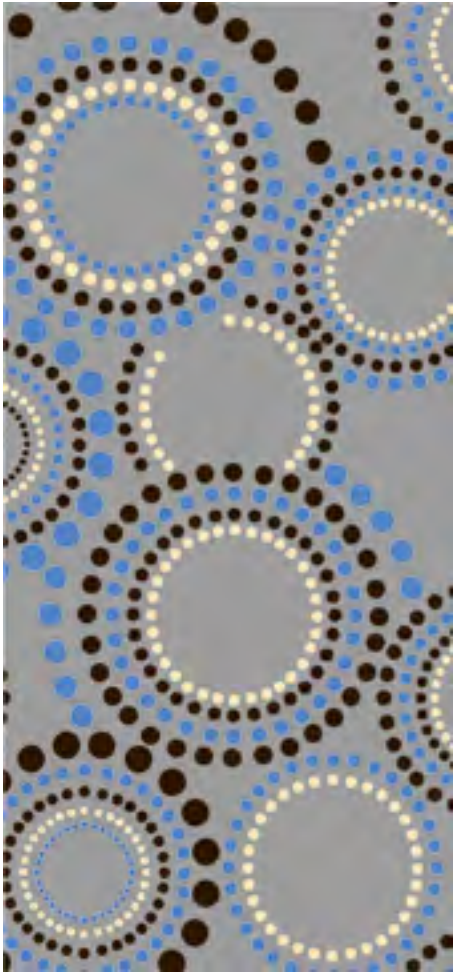
Pestana Casino Park Hotel ★ ★ ★ ★ ★



AXMINSTER
3 COLOURS







A1



A2



A3



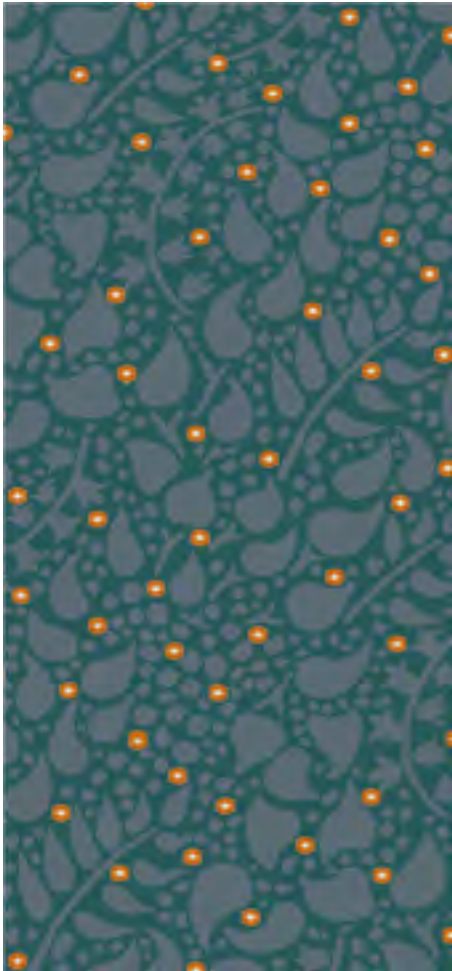
A4



A5



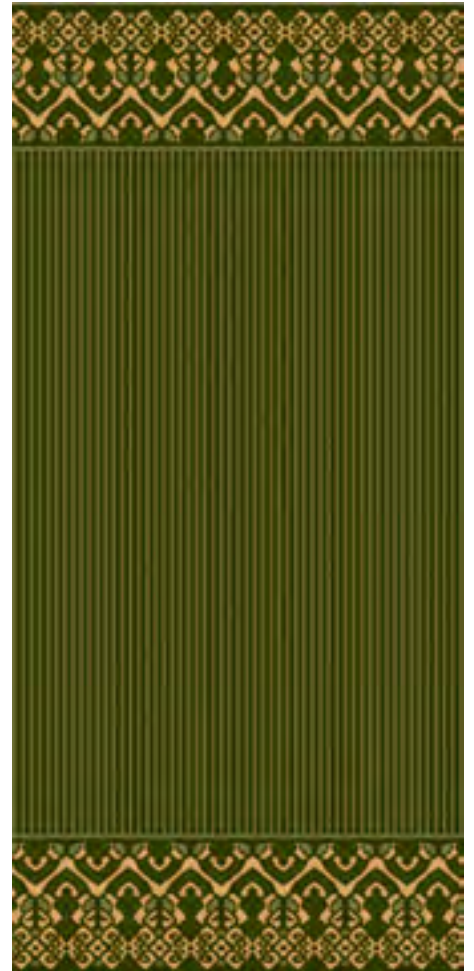
A6



A7



A8



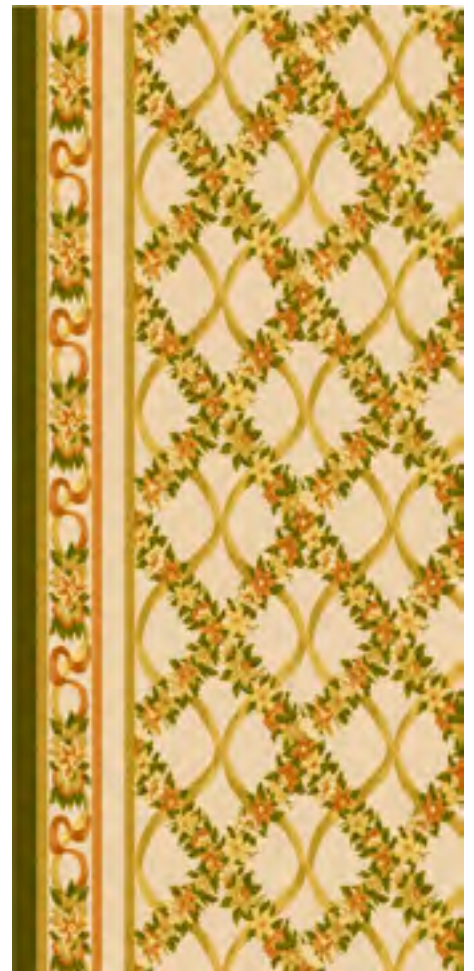
A9



A10



A11



A12



	COPPER	SILVER	GOLD	PLATINUM
	Heavy Commercial	General Commercial	Heavy Commercial	Heavy Commercial
Construction	Tufted, Cut Pile			
Composition	100% Polyamide			
Pile Weight	668g/m²	790g/m²	900g/m²	1.150g/m²
Pile Height	6,0mm	7,5mm	7,0mm	7,7mm
Backing	75% Polyester 25% Polyamide	Textile		
Width	4,00m			

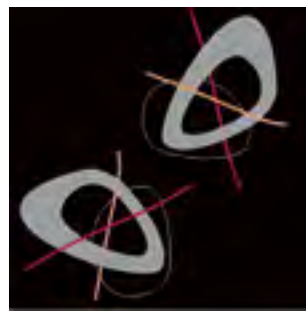
PRINTED

ULTIMATE VERSATILITY

Wall to wall printing technology provides a broad variety of decorative options for offices, hotels, companies, shops and similar venues.

Personalised wall to wall carpets printed in colour, can be obtained from any image.

In the pictures displayed we can observe the computer generated graphics and the correspondingly produced wall to wall carpet.



VIRTUAL



REAL

Unique and personalised product, with excellent colourfast values, high quality and construction.

Printed Carpet allows the personalisation of any environment in a way suited to personal taste.

Similar to other wall to wall carpets, printed carpets can be easily maintained, through water/steam washing without adversely affecting appearance.

The colours are transferred during the printing process to the fibres through extreme heat and pressure.



PRINTED
8 COLOURS



Tróia Design Hotel ★ ★ ★ ★ ★







PRINTED
8 COLOURS



PRINTED
12 COLOURS



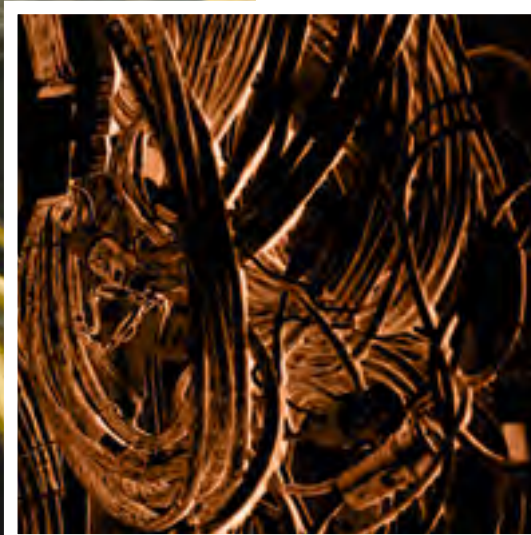


Hotel Teatro ★ ★ ★ ★





PRINTED
12 COLOURS



PRINTED
3 COLOURS









PRINTED
10 COLOURS

PRINTED
6 COLOURS

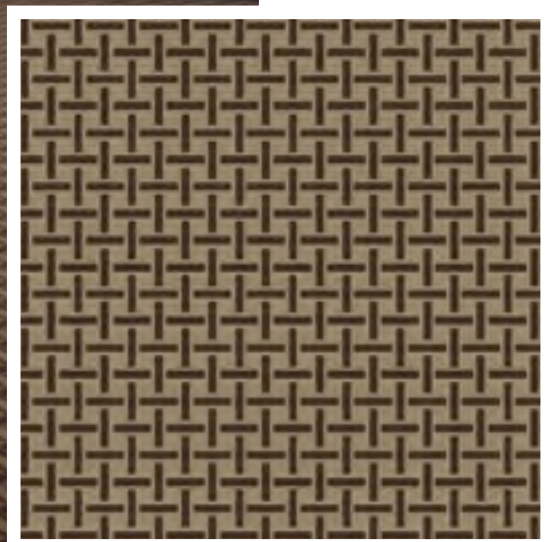








PRINTED
2 COLOURS



PRINTED
14 COLOURS





Meliá Braga Hotel & Spa ★ ★ ★ ★ ★





PRINTED
2 COLOURS



PRINTED
5 COLOURS



Hotel Tivoli Slintra ★★★★★





P1



P2



P3



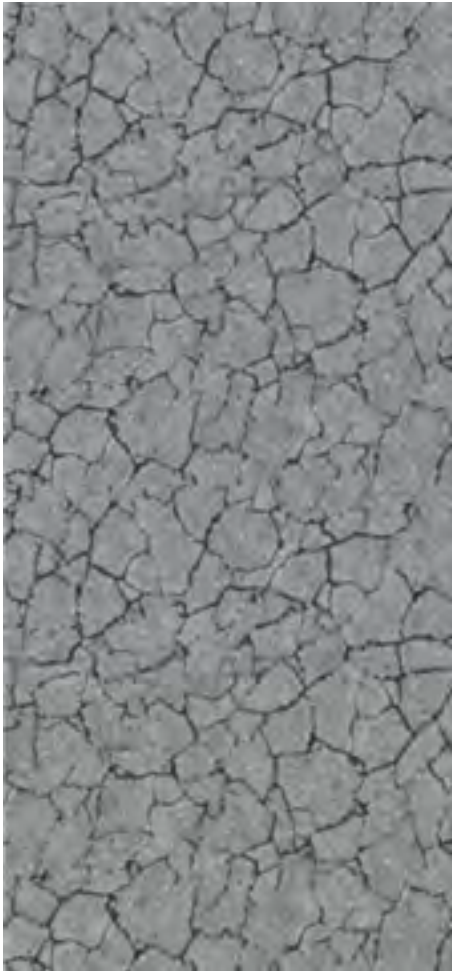
P4



P5



P6



P7



P8



P9



P10



P11



P12



TILES

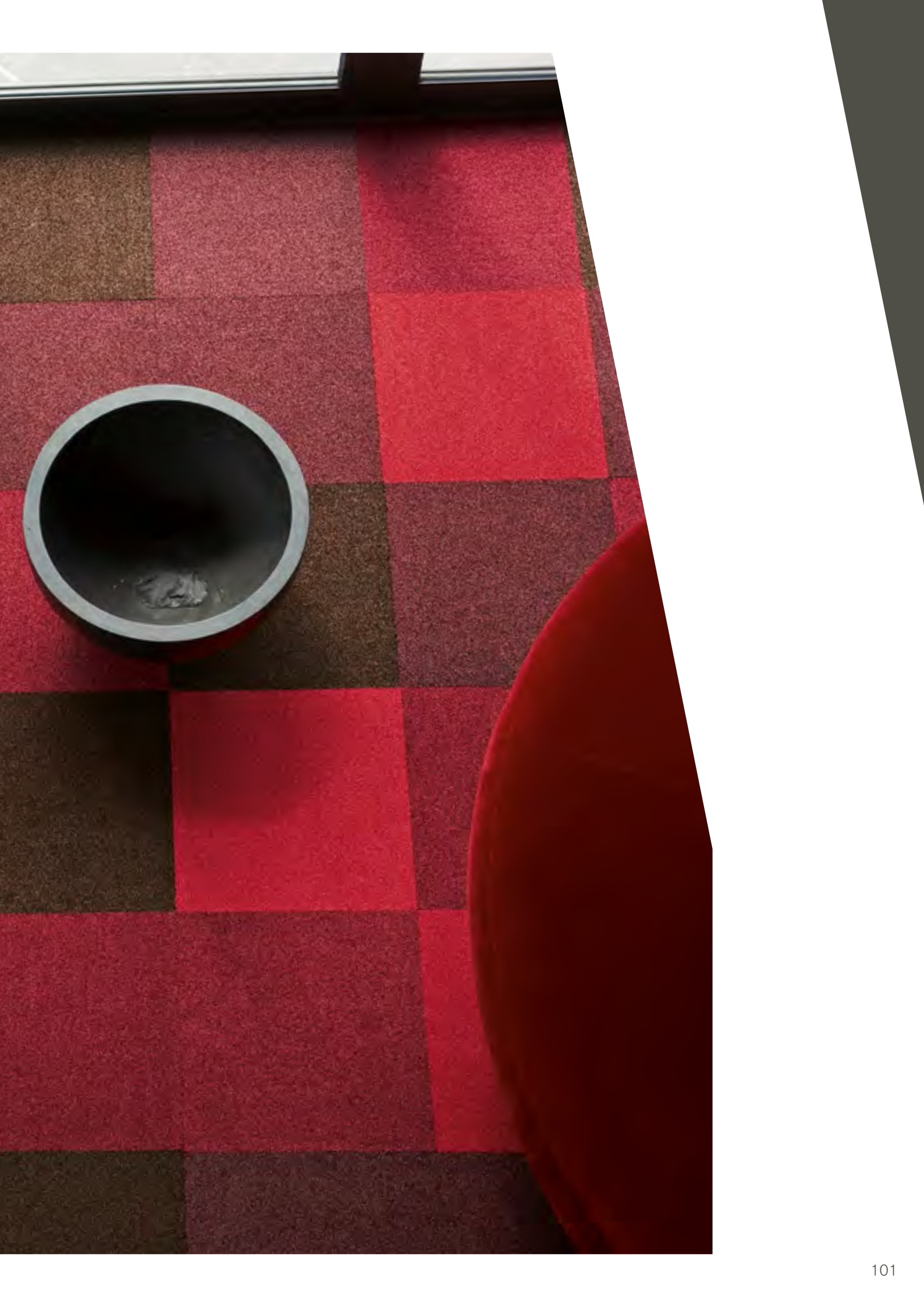
Tiles have several advantages. They are versatile, easily maintained and can be installed in any location, providing ample flexibility and the ultimate combination of colour, texture and design styling.

Suitable for areas where high traffic, soiling, staining and frequent usage are experienced.



Tiles are recommended for areas with a high probability of damage, soiling, staining and intensive wear, being easily and individually interchanged or replaced when damage occurs or when access to the subfloor is required.







RUGS

We offer a broad range of rugs produced by manual or mechanical means. Rugs can be tailor made to your own specification or you can select from our broad range of materials, textures, colours and sizes.

In all cases we manufacture to the highest quality standards.

MATERIALS	
NATURALS	SYNTHETICS
Cotton, Coir, Wool, Flax, Natural Leather, Seagrass, Natural Silk, Sisal	Acrylic, Artificial Leather, Nylon, Polyester, Polypropylene, PVC, Synthetic Grass, Viscose

Our products correspond to the highest requirements of quality, colour and design.

Our team of inhouse colourists designers and stylists maintain a full portfolio of the latest international interior design trends.

TYPES OF MANUFACTURING

HAND TUFTED

HAND WOVEN

HAND KNOTTED

HAND STITCHED

MACHINE MADE

PRINTED





Axis Viana Business & Spa Hotel ★★★★★



Holiday Inn Express Lisbon Airport ★ ★ ★





HF Ipanema Park ★★★★★









HF Fénix Porto ★★★★★









HF Fénix Lisboa ★★★★★













SOLVERDE HOTÉIS & CASINOS

Hotel Solverde Spa and Wellness Centre *****
 Algarve Casino Hotel *****
 Hotel Casino Chaves ****
 Casino de Espinho
 Casino de Chaves
 Casino de Vilamoura
 Casino de Portimão
 Casino de Monte Gordo
 Aparthotel Solverde

HDP PORTO HOTÉIS DE PORTUGAL

Sheraton Porto Hotel & Spa *****
 Sheraton Lisboa Hotel & Spa *****
 Hotel Crowne Plaza Vilamoura *****

PESTANA HOTEL'S & RESORTS

Pestana Casino Park Hotel *****
 Pestana Cascais (Atlantic Gardens) ****
 Hotel Pestana Carlton Madeira ****
 Pousada dos Lóios

REGENCY HOTEL'S & RESORTS

Hotel Regency Palace *****
 Hotel Regency Club ****
 Madeira Regency Cliff Hotel ***

TRYP HOTELS / MELIÁ

Meliá Braga Hotel & Spa *****
 Meliá Ria *****
 Tryp Lisboa Aeroporto Hotel ****
 Tryp Lisboa Oriente Hotel ****
 Tryp Porto Expo ***
 Tryp Porto Centro ***
 Tryp Dona Maria ****
 Tryp Leiria ****

HOTÉIS TIVOLI

Tivoli Lisboa *****
 Hotel Tivoli Lisboa Oriente ****
 Hotel Tivoli Sintra ****
 Hotel Tivoli Lagos ****

HOTÉIS FÉNIX

HF Ipanema Park *****
 HF Fénix Porto Hotel ****
 HF Ipanema Porto Hotel ****
 HF Fénix Urban Hotel ****
 HF Fénix Lisboa ****
 HF Fénix Garden ***
 HF Fénix Music ***
 HF Tuêla Porto ***

NAU HOTELS & RESORTS

The Vintage House - Lisboa *****
 Salgados Palace ****
 Vintage House Douro *****
 Lago Montargil & Villas *****

São Rafael Suites *****
 São Rafael Atlântico *****
 Salgados Dunas Suites *****
 Salgados Vila das Lagoas Apartments ****
 Salgados Palm Village Apartments & Suites ****
 Morgado Golf & Country Club ****

NH HOTEL GROUP

NH Campo Grande ****
 NH Lisboa Liberdade ****

DOURO AZUL

Amavida
 Queen Isabel
 Viking Torgil
 Viking Hemming
 Douro Spirit
 Douro Cruiser
 Douro Queen
 Viking Osfrid
 Scenic Azure

AXIS HOTELS

Axis Viana Business & SPA Hotel ****
 Axis Ofir Beach Resort Hotel ****
 Axis Porto Business and SPA Hotel ****
 Axis Vermar Conference & Beach Hotel ****
 Axis Ponte de Lima - Golf Resort Hotel ***

VILA GALÉ

Vila Galé Collection Palácio dos Arcos *****
 Hotel Vila Galé Porto ****
 Hotel Vila Galé Ópera ****
 Vila Galé Douro ****
 Hotel Vila Galé Náutico ****
 Vila Galé Atlântico ****
 Vila Galé Praia ****
 Vila Gale Évora ****
 Vila Galé Ampalius ****

HOTEIS HOLIDAY INN EXPRESS

Hotel Holiday Inn Express Porto Exponor ***
 Holiday Inn Express Lisbon Airport ***

JUPITER HOTÉIS

Jupiter Lisboa Hotel ****
 Jupiter Algarve Hotel ****

BESSAHOTEL

BessaHotel Liberdade *****
 BessaHotel Boavista *****

CS HOTELS, GOLF & RESORTS

CS Salgados Golf & Beach Hotel *****
 CS Hotel do Lago Montargil *****
 CS Salgados Grande Hotel *****
 Palácio de Congressos do Algarve

TURISTRELA

Hotel Serra da Estrela *****
 Estalagem Varanda dos Carqueijais *****

INATEL

INATEL - U.H. Albufeira
 INATEL - U.H. Linhares

HOTÉIS DO BOM JESUS

Hotel do Templo ****
 Hotel do Parque ****
 Hotel do Elevador ****
 Hotel do Lago ***

STAY HOTELS

Stay Hotel Guimarães ***
 Stay Hotel Faro Centro ***

PORTUSCALE CRUISES

Paquete Arion
 Paquete Funchal

DETAILS HOTELS

Aqua Pedra dos Bicos - Design Beach
 Hotel ****
 Velamar Sun & Beach Hotel ***

OTHER HOTEL UNITS IN PORTUGAL

Açores

Pedras do Mar Hotel Resort & Spa *****
 Atlântida Mar Hotel ****
 Hotel Horta ****
 Hotel Açores Atlântico ****
 Aparthotel Antillia ****
 Hotel Camões ****
 Hotel Ponta Delgada ***
 Hotel Casa Hintze Ribeiro
 Clube de Golfe da Ilha Terceira

Aveiro

Grande Hotel do Luso ****
 Hotel Dighton ****
 Hotel de Ihavo Plaza & Spa ****
 Hotel Moliceiro ****
 Estalagem de Sangalhos ****
 Hotel Meia Lua ****
 Hotel Nova Cruz ***
 Hotel Afonso V ***
 Best Western Hotel Imperial ***
 Residencial dos Lóios
 Hotel Barra ***
 Hotel La Fontaine ***
 Hotel Cidade Ílhavo
 Auditório Simria
 Cifial, SA
 Grupo DESFO
 Academia de Música de Paços de
 Brandão

Beja

Cineteatro de Almodovar
Parque da Natureza de Noudar

Braga

Hotel Torre de Gomariz Wine & Spa *****
Santa Luzia ArtHotel ****
Hotel da Oliveira ****
Hotel Fundador ***
Hotel Carvalho Araújo **
Estalagem Parque do Rio
Cineplace Portugal Cinemas

Bragança

Estalagem do Caçador ****
Hotel Muchacho
Estalagem Senhora das Neves ****

Castelo Branco

Hotel "O Alambique D'Ouro" ****
Hotel Santa Eufémia **
Varandas do Zêzere

Coimbra

Quiaios Hotel ****
Hotel Dona Inês Coimbra ***
Hotel Astória ***

Faro

Palácio de Congressos do Algarve
The Lake SPA Resort *****
Cascade Resort Hotel Lagos *****
Hotel Porta Nova ****
Hotel Topázio ***
Hotel dos Navegadores ***
Solar de Mós **
Hotel Guerreiros do Rio
Hotel Apartamento Ourabay
Villa Nautilus Alvôr

Guarda

Colmeal Countryside Hotel ****
Hotel Vanguarda ***
Herdade São Lourenço do Barrocal
Hotel Rural do Cró

Leiria

Praia D'El Rey Marriot Golf & Beach Resort *****
Hotel Soleil Peniche ***
Hotel das Termas **
Solar da Cerca do Mosteiro

Lisboa

Palácio da Cidadela de Cascais
Skyna Hotel Lisboa ***
Hotel Inglaterra Charm & Boutique *****
York House Hotel Lisbon ****
Internacional Design Hotel ****

Inspira Santa Marta Hotel & Spa ****
Holiday Inn Lisbon-Continental ****
Radisson SAS Hotel Lisboa ****
Hotel Vip Executive Barcelona ****
Turim Lisboa Hotel ****
America Diamonds Hotel ***
Lezíria Parque Hotel ***
Hotel Vip Inn Veneza ***
Hotel America Diamond's ***
Ever Lisboa City Center Hotel ***
The 7 Hotel Lisboa ***
Hotel Sintra Bliss House
Hotel Mivon
Quinta de Sant'Ana
Guesthouse Villa Garden
The 8 - Downtown Suites
Dear Lisbon Guesthouse
Otilia Hotel & Apartamentos
Assembleia da República Portuguesa
Vodafone
COSEC Comp. Seguro de Créditos S.A.
Centro Comercial Colombo
Discoteca Twins
Luz & Som
Vista Alegre/Atlantis

Madeira

Estalagem Quinta da Casa Branca *****
Four Views Monumental Lido ****
Suite Hotel Jardins da Ajuda ****
Hotel Oásis Atlantic ****
Hotel Monumental Lido ****
Hotel Girasol ****
Monte Mar Palace Hotel ****
Hotel Baia Azul ****
Hotel Dorisol Florasol Madeira ***
Estalagem do Santo da Serra ****
Hotel Orca Praia ***
Albergaria Dias ***
Hotel Porto Moniz

Porto

Douro Royal Valley Hotel & Spa *****
Casa da Calçada Relais & Châteaux ****
Flores Village Hotel & Spa ****
Douro River Hotel ****
Best Western Hotel Inca ****
São Felix Hotel Hillside & Nature ****
Hotel da Música ****
Hotel Teatro ****
Quality Inn Portus Cale ****
Hotel Cidnay ****
Hotel Egatur Maia ****
Hotel PraiaGolfe ****
Santana Hotel ****
Hotel e Clube de Golfe de Amarante
Hotel Quality Batalha Porto ***
Grande Hotel da Póvoa ***
Hotel Navarras ***
Residencial da Foz ***

Hotel Star Inn Porto ***
Porto Antas Hotel ***
Albergaria Cervantes ***
Hotel S. Gabriel **
Quinta da Pacheca
Habana Motel
Motel Flamingo
Motel Silk
Motel Tropicana
AEP – Associação Empresaria de Portugal
FCP - Futebol Clube do Porto (Estádio)
FCP - Futebol Clube do Porto SAD
Museu do Futebol Clube do Porto
Caves Ferreirinha
Sogrape
Carlton Life
Arrábida Shopping
NLC - New Line Cinemas
Cinemas UCI
Restaurante Real Indiana
Restaurante Essência
Clube 21 Restaurante
Discoteca Twins
Gil Sousa Fashion Jewel's
Luz & Som
Sogrape Vinhos, SA
Centro Educativo de Soutelo

Santarém

Hotel Avenida de Fátima ***
Hotel do Prado ***
Residencial Santo Amaro
Residencial Alecrim

Setúbal

Tróia Design Hotel *****
Casino de Tróia
Hotel Bocage **
Rio Art Guesthouse
Albergaria Don Nuno

Portalegre

Hotel D. Luis ***

Viana do Castelo

Hotel Flôr de Sal ****
Boega Hotel ****
Hotel Porta do Sol ****
Hotel Turismo do Minho *****

Vila Real

Six Senses Douro Valley *****
The Vintage House Hotel *****

Viseu

Six Senses Douro Valley *****
Douro Cister Hotel Resort Rural & Spa ****
Douro Park Hotel ****
Nelas Park Hotel ***
T&T - Multielectrica

OTHER UNITS

BCP – Banco Comercial Português
Banco BPI, S.A.
Finibanco
BBVA - Banco Bilbao Vizcaya Argentaria
BPN - Banco Português de Negócios
Real - Companhia de Seguros

INTERNATIONAL UNITS

Algeria

Hilton Alger Hotel *****
Hotel Hani Alger ****
Mosque Kouba Alger
Ecole Militaire ENITA - Bordj El Bahri

Angola

Epic Sana Luanda Hotel *****
Casino Olympia
Hotel Serra de Chela
Hotel Serra de Chela II

Azerbaijan

Demirchi Tower – Baku

Cabo Verde

Hotel Oásis Atlântico Salinas Sea *****
Hotel Oasis Belorizonte DDD

France

Hostellerie du Chateau de la Chevre D'or *****

Libyan

Tripoli Grand Hotel *****

Marocco

Al Baraka
Amphitrite Beach Hotel ****
Anfa Suite Hotel
Art Palace & Spa Casablanca *****
Azembay Beach Club & Resort
Bab Hotel Marrakech ****
Golden Tulip Rawabi Marrakech ****
Hivernage Hotel & Spa/Pearl *****
Hotel Barceló Fès Medina ****
Hotel Imperial Casablanca ****
Hotel Sofitel Agadir Thalassa Sea & Spa *****
Hyatt Place Golf Hotel Taghazout Bay *****
Mosque Samir
Radisson BLU Hotel Marrakech Carré Eden *****
Riad Lotus Club
Ristorante Italiano L'Ultimo Bacio *****
Royal Air Maroc
Royal Club Equestre Dar Essalam-Rabat
Shem's Casino – Agadir
Sirayane Boutique Hotel & Spa *****
The Pearl Marrakech *****
Villa Blanca Hotel & Spa ****

Saudi Arabia

Information & Technology Center – Riyadh

Senegal

Hotel Fleur de Lys Hotel ****

Spain

Madrid Marriott Auditorium Hotel - Conference Center

Hotel Hesperia Ciutat Mallorca ****
Hesperia Madrid *****
Meliá Bilbao *****
Meliá Madrid ****

Switzerland

Hotel Adriatica ***

Tunisia

Les Berges Du Lac Concorde *****
Hotel Paris ****





EN 14041



EN 1307

GRAPHICS

lusotufo®

COPPER

General Commercial

SILVER

General Commercial

GOLD

Heavy Commercial

PLATINUM

Heavy Commercial

Construction
CompositionTufted, Cut Pile
80% Wool + 20% Polyamide

Pile Weight	1.000g/m ²	1.200g/m ²	1.400g/m ²	1.600g/m ²
Total Weight	1.960g/m ²	2.150g/m ²	2.400g/m ²	2.600g/m ²
Pile Height	7,5mm	7,5mm	8,0mm	8,5mm
Total Height	10,0mm	10,5mm	11,0mm	12,0mm
N° Points/m ²	99.200	102.300	105.400	120.900

Gauge
Backing
Width1/8"
Jute
4m and 5m

COLOUR FASTNESS

To rubbing
To light4
5

Reaction to Fire

Cfl-S1/ Bfl-S1 (optional)

MAINTENANCE

The implementation of an adequate cleaning and maintenance regime from the time of installation of your commercial carpeting, makes it possible to safeguard your carpets appearance, enhance the image of your installation and ensure continued high performance throughout its life cycle. To ensure the carpet will last longer and look better just follow the three basic rules of carpet maintenance: vacuum regularly; remove spills immediately; professionally clean as required (usually no more than once every year or two).

INSTALLATION

Vacuum the old carpet before it is removed, to help eliminate dust.
The surface should be plain, dry and clean.
Ensure prior to installation the carpet is completely stretched to minimise wrinkling and rippling.



TREATMENT Scotchgard (Optional)

Scotchgard protection preserves your carpet from the risks of soiling and staining, making it easy to care for your carpets or rugs, preserving their looks for a longer period of time.

TREATMENT IMO (Optional)

This product can have a special treatment to comply with the Council Directive of the European Union 96/98/EC of 20 December 1996 on marine equipment.

TREATMENT ANTI MOTH (Optional)

This product can have a special treatment with natural anti-moth product

LUSOTUFO® reserves the right to amend any technical details without prior notice.

LUSOTUFO, SA

Apartado 32 | 3886-908 Cortegaça OVR | Portugal | Telef./Phone: (+351) 256.750.500 | Fax: (+351) 256.750.504 | E-mail: lusotufo@lusotufo.pt | www.lusotufo.com



EN 14041



EN 1307

AXMINSTER

lusotufo®

	COPPER	SILVER	GOLD	PLATINUM
	Heavy Commercial	Heavy Commercial	Heavy Commercial	Heavy Commercial

Construction
Composition

Woven, Cut Pile
80% Wool + 20% Polyamide

Pile Weight	1.225g/m ²	1.380g/m ²	1.530g/m ²	1.680g/m ²
Total Weight	2.000g/m ²	2.200g/m ²	2.200g/m ²	2.400g/m ²
Pile Height	7,5mm	7,5mm	7,5mm	7,5mm
Total Height	10,5mm	10,5mm	10,5mm	10,5mm
N° Points/m ²	86.940	97.704	108.744	119.508
Pitch	7 per inch	7 per inch	7 per inch	7 per inch
Rows	8 per inch	9 per inch	10 per inch	11 per inch

Gauge
Backing
Width

1/7"
Polypropylene
3,66m and 4m

COLOUR FASTNESS

To rubbing
To light

4
5

Reaction to Fire

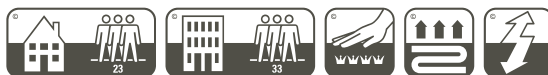
Cfl-S1/ Bfl-S1 (optional)

MAINTENANCE

The implementation of an adequate cleaning and maintenance regime from the time of installation of your commercial carpeting, makes it possible to safeguard your carpets appearance, enhance the image of your installation and ensure continued high performance throughout its life cycle. To ensure the carpet will last longer and look better just follow the three basic rules of carpet maintenance: vacuum regularly; remove spills immediately; professionally clean as required (usually no more than once every year or two).

INSTALLATION

Vacuum the old carpet before it is removed, to help eliminate dust.
The surface should be plain, dry and clean.
Ensure prior to installation the carpet is completely stretched to minimise wrinkling and rippling.



TREATMENT IMO (Optional)

This product can have a special treatment to comply with
the Council Directive of the European Union 96/98/EC of 20 December 1996 on marine equipment.

LUSOTUFO® reserves the right to amend any technical details without prior notice.

LUSOTUFO, SA

Apartado 32 | 3886-908 Cortegaça OVR | Portugal | Telef./Phone: (+351) 256.750.500 | Fax: (+351) 256.750.504 | E-mail: lusotufo@lusotufo.pt | www.lusotufo.com



EN 14041



EN 1307

PRINTED

lusotufo®

COPPER**SILVER****GOLD****PLATINUM****Heavy Commercial****General Commercial****Heavy Commercial****Heavy Commercial**Construction
CompositionTufted, Cut Pile
100% PolyamidePile Weight
Total Weight
Pile Height
Total Height
N° Points/m²668g/m²
1.650g/m²
4,0mm
6,0mm
316.000790g/m²
1.690g/m²
5,0mm
7,5mm
189.600900g/m²
1.800g/m²
5,0mm
7,0mm
169.8501.150g/m²
2.050g/m²
6,0mm
7,7mm
201.450Gauge
Backing
Width1/10"
75% Polyester 25% Polyamide
4m1/10"
Textile
4m

Reaction to Fire

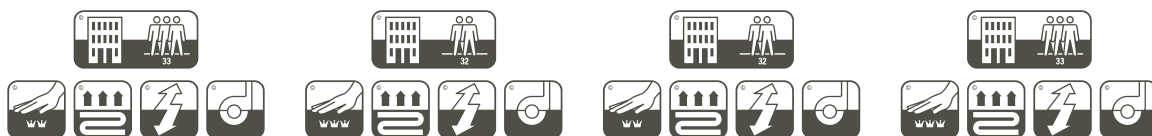
Cfl-S1/ Bfl-S1 (optional)

MAINTENANCE

The implementation of an adequate cleaning and maintenance regime from the time of installation of your commercial carpeting, makes it possible to safeguard your carpets appearance, enhance the image of your installation and ensure continued high performance throughout its life cycle. To ensure the carpet will last longer and look better just follow the three basic rules of carpet maintenance: vacuum regularly; remove spills immediately; professionally clean as required (usually no more than once every year or two).

INSTALLATION

Vacuum the old carpet before it is removed, to help eliminate dust.
The surface should be plain, dry and clean.
Ensure prior to installation the carpet is completely stretched to minimise wrinkling and rippling.

**OPTIONAL**

300g or 550g felt backing

LUSOTUFO® reserves the right to amend any technical details without prior notice.

LUSOTUFO, SA

Apartado 32 | 3886-908 Cortegaça OVR | Portugal | Telef./Phone: (+351) 256.750.500 | Fax: (+351) 256.750.504 | E-mail: lusotufo@lusotufo.pt | www.lusotufo.com

LUSOTUFO , S.A.

SEDE | HEADQUARTER

Apartado 32
3886-908 Cortegaça OVR
Portugal

TEL/PHONE: (+351) 256 750 500
FAX: (+351) 256 750 504

lusotuf@lusotuf.pt
www.lusotuf.pt

SHOWROOM CORTEGAÇA

Rua Olívia e Florindo Cantinho, 290
3885-317 Cortegaça OVR
Portugal

TEL/PHONE: (+351) 256 750 500
FAX: (+351) 256 750 504

lusotuf@lusotuf.pt

SHOWROOM LISBOA

Parque Expo
Rua do Mar do Norte, nº1A
1990-143 Lisboa
Portugal

TEL/PHONE: (+351) 219 538 318/9
FAX: (+351) 219 538 320

showroom.lisboa@lusotuf.pt

lusotufo®
rugs & carpets for life



www.lusotufo.com
lusotufo@lusotufo.pt